

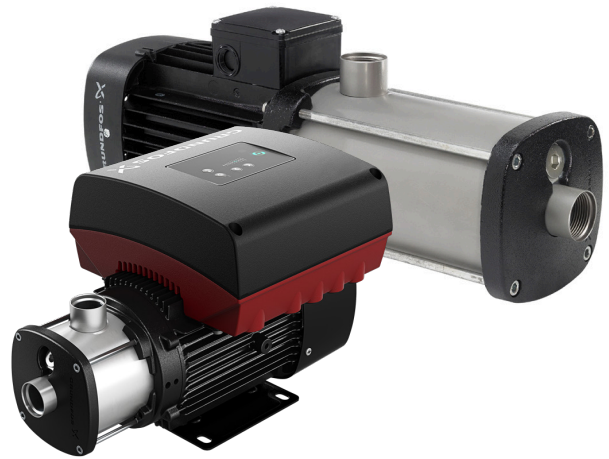
# Compact Horizontal Multi-stage Pumps

## GRUNDFOS CM/CME

The Grundfos CM range of horizontal multi-stage pumps provide a compact, reliable and quiet solution designed to work on a variety of applications. While CM pumps are fitted with mains-operated motors, the CME incorporates a motor with an integrated frequency converter and PID controller.

### Key Features and Benefits

- Nordlock© washer ensures secure clamping of pump impellers and provides quick and easy assembly and disassembly
- Grundfos designed mechanical o-ring shaft seal offers superior dry running capabilities and reduced sticking problems
- Encapsulated sleeve o-ring design retains o-ring when temperature change causes expansion and contraction
- Labyrinth seal provides protection for motor bearings and reduces maintenance
- Rotation indicator allows you to quickly check if 3-phase electrical connection is correct; indicator shows black if correct, white if incorrect
- Filling plug is sealed by o-ring for easy maintenance
- CME option with integrated pump, motor and variable frequency drive delivers a plug and pump solution
- Materials of construction include ASTM A48 cast iron, AISI 304 stainless steel and AISI 316 stainless steel

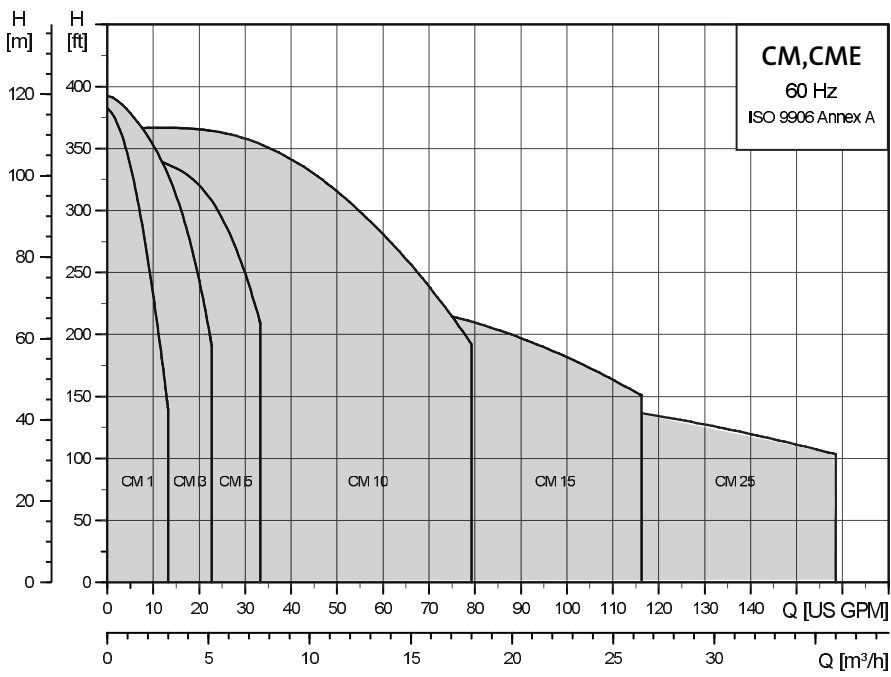


#### APPLICATIONS

- Washing and cleaning
- Temperature control
- Water treatment
- Chemical and pharmaceutical industries
- Building services
- Irrigation

# CM/CME Technical Data

CM/CME Information	
Flow, Q:	max. 160 gpm (36 m <sup>3</sup> /h)
Head, H:	max. 393 ft (120 m.)
Liquid temp:	-22°F to +248°F (-30°C to +120°C)
Operating Pressure:	max. 232 psi (16 bar)
Power:	0.3 to 8.4 hp (.22 to 6.6 kW)



The name Grundfos, the Grundfos logo, and be think innovate are registered trademarks owned by Grundfos Holding A/S or Grundfos A/S, Denmark. All rights reserved worldwide. L-CM-5L-002 Rev. 09-17