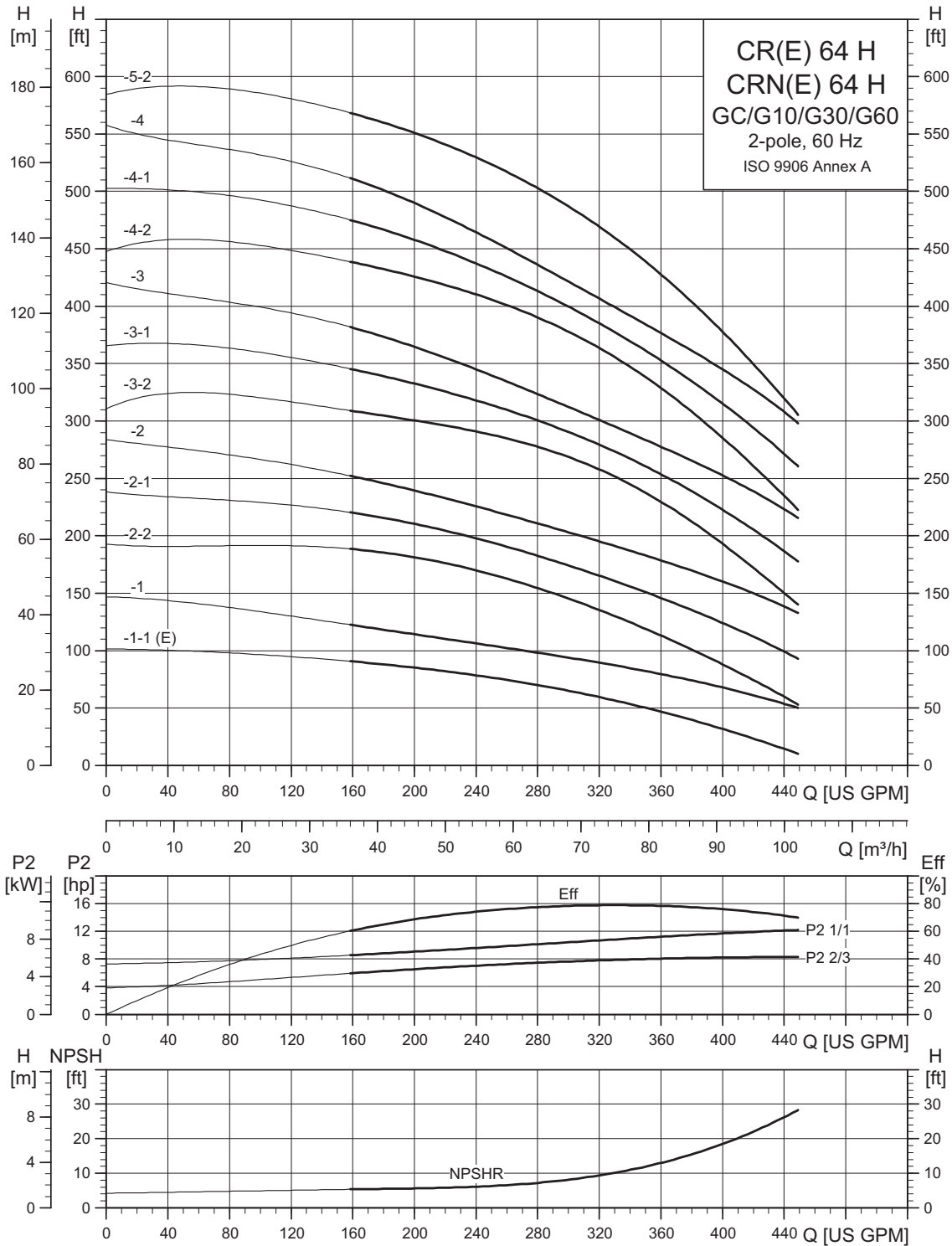
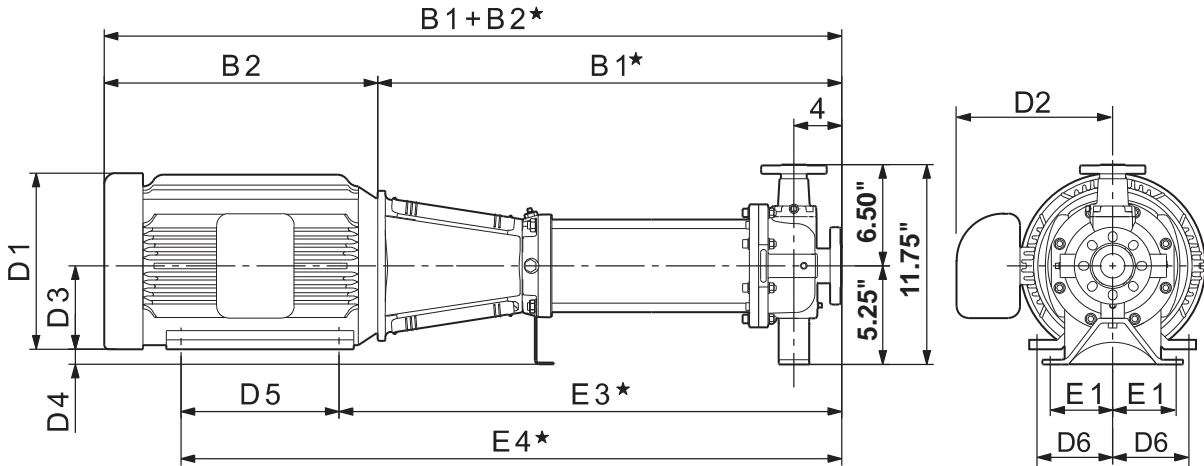


CR, CRE 64 H GC/G10/G30/G60



TM04 6300 5110

Dimensional sketches GC (3" x 2" x 6")



TM04 4872 0510

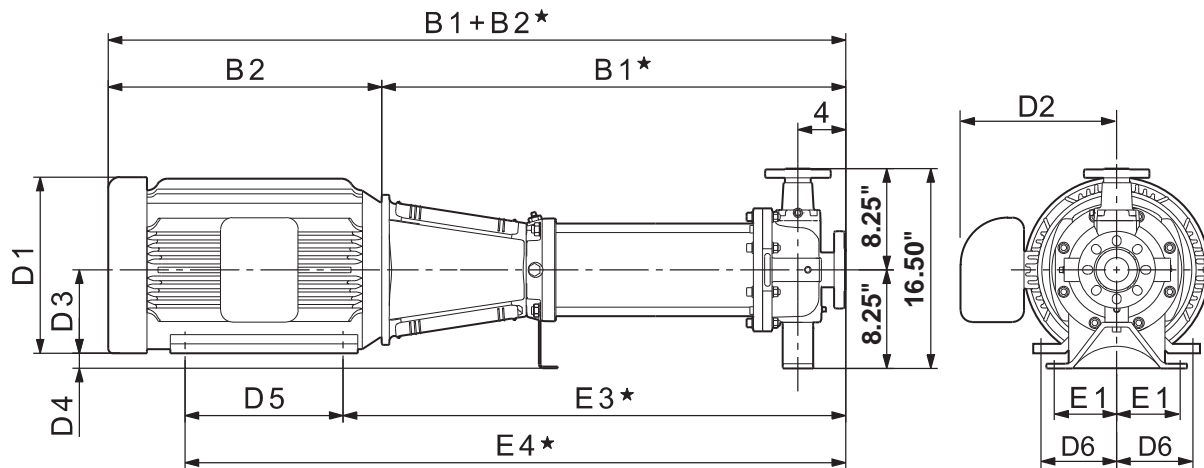
Dimensions and weights GC (3" x 2" x 6")

Pump type	Power [hp]	Ph	Dimensions [inches]												Ship. weight [lbs]	Dimensions [inches]			Ship. weight [lbs]			
			TEFC													ODP				MLE		
			B1*	B1+B2*	E1	E3*	E4*	D1	D2	D3	D4	D5	D6	D1		D2	B1+B2*	D1		D2	B1+B2*	
CR(N)(E) 64-1-1 H	10	1	27.25	43.00	3.00	30.50	36.00	11.50	10.38	5.25	0.00	5.50	4.25	277	—	—	—	—	—	—	—	
		3	27.25	42.75	3.00	30.50	36.00	8.75	5.38	5.25	0.00	5.50	4.25	261	—	—	—	8.75	7.50	42.75	275	
CR(N) 64-1 H	15	3	27.25	47.38	3.00	31.25	39.50	12.63	9.50	6.25	-1.00	8.25	5.00	343	10.75	6.88	45.13	—	—	—	—	
CR(N) 64-2-2 H	20	3	30.50	50.25	3.00	34.50	42.75	12.75	10.13	6.25	-1.00	8.25	5.00	373	11.50	9.00	48.13	—	—	—	—	
CR(N) 64-2-1 H	20	3	30.50	50.25	3.00	34.50	42.75	12.75	10.13	6.25	-1.00	8.25	5.00	367	11.50	9.00	48.13	—	—	—	—	
CR(N) 64-2 H	25	3	30.50	51.88	3.00	35.00	44.50	12.75	12.13	7.00	-1.75	9.50	5.50	467	11.50	11.38	49.25	—	—	—	—	
CR(N) 64-3-2 H	30	3	33.75	55.13	3.00	38.25	49.25	12.75	12.13	7.00	-1.75	11.00	5.50	637	11.50	11.38	54.00	—	—	—	—	
CR(N) 64-3-1 H	40	3	33.75	55.13	3.00	38.25	49.25	15.63	12.13	7.00	-1.75	11.00	5.50	652	11.50	11.38	54.63	—	—	—	—	
CR(N) 64-3 H	40	3	33.75	55.13	3.00	38.25	49.25	15.63	12.13	7.00	-1.75	11.00	5.50	652	11.50	11.38	54.63	—	—	—	—	
CR(N) 64-4-2 H	40	3	37.00	58.38	3.00	41.50	52.50	15.63	12.13	7.00	-1.75	11.00	5.50	731	11.50	11.38	57.88	—	—	—	—	
CR(N) 64-4-1 H	50	3	37.00	62.13	3.00	42.00	54.00	16.50	14.63	8.00	-2.75	12.00	6.25	761	13.38	12.25	58.88	—	—	—	—	
CR(N) 64-4 H	50	3	37.00	62.13	3.00	42.00	54.00	16.50	14.63	8.00	-2.75	12.00	6.25	761	13.38	12.25	58.88	—	—	—	—	
CR(N) 64-5-2 H	60	3	40.25	67.38	3.00	45.88	57.13	17.00	14.63	9.00	-3.75	11.25	7.00	951	15.13	11.63	64.00	—	—	—	—	

Note: Terminal box is on top of motor on 3-phase up to 10 hp. All other motors have terminal box on the side. Reference D2 dimension. Weights are based on pump with TEFC motor.

★ Add 0.16 inches for CRN-H dimensions.

Dimensional sketches G10 (3" x 2" x 6")



TM04 4872 0510

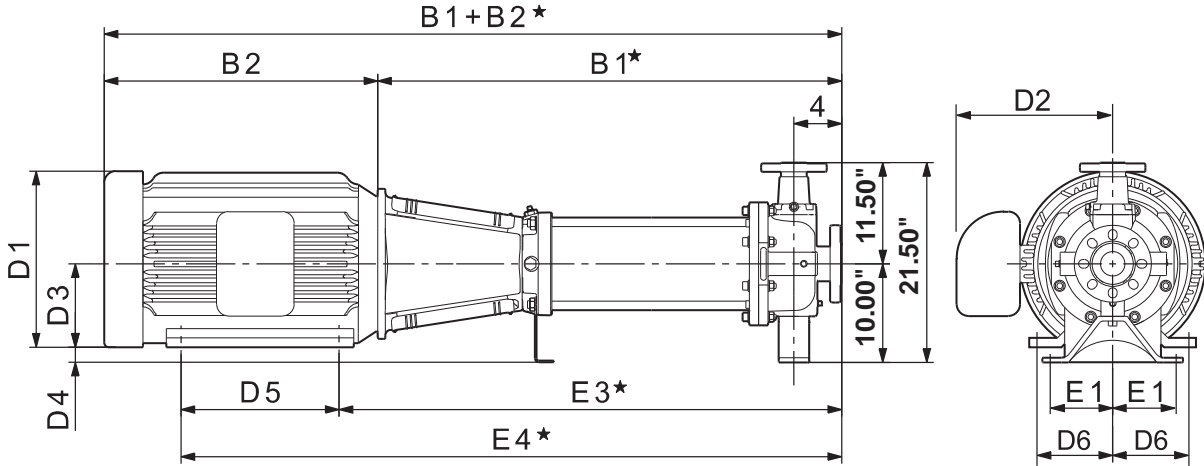
Dimensions and weights G10 (3" x 2" x 6")

Pump type	Power [hp]	Ph	Dimensions [inches]										Ship. weight [lbs]	Dimensions [inches]			Ship. weight [lbs]				
			TEFC											ODP				MLE			
			B1*	B1+B2*	E1	E3*	E4*	D1	D2	D3	D4	D5		D6	D1	D2		B1+B2*	D1	D2	B1+B2*
CR(N)(E) 64-1-1 H	10	1	26.00	41.75	4.88	29.25	34.75	11.50	10.38	5.25	3.00	5.50	4.25	277	—	—	—	—	—	—	—
		3	26.00	41.50	4.88	29.25	34.75	8.75	5.38	5.25	3.00	5.50	4.25	261	—	—	—	8.75	7.50	41.50	275
CR(N) 64-1 H	15	3	26.00	46.13	4.88	30.00	38.25	12.63	9.50	6.25	2.00	8.25	5.00	343	10.75	6.88	43.88	—	—	—	—
CR(N) 64-2-2 H	20	3	29.25	49.00	4.88	33.25	41.50	12.75	10.13	6.25	2.00	8.25	5.00	372	11.50	9.00	46.88	—	—	—	—
CR(N) 64-2-1 H	20	3	29.25	49.00	4.88	33.25	41.50	12.75	10.13	6.25	2.00	8.25	5.00	367	11.50	9.00	46.88	—	—	—	—
CR(N) 64-2 H	25	3	29.25	50.63	4.88	33.75	43.25	12.75	12.13	7.00	1.25	9.50	5.50	467	11.50	11.38	48.00	—	—	—	—
CR(N) 64-3-2 H	30	3	32.50	53.88	4.88	37.00	48.00	12.75	12.13	7.00	1.25	11.00	5.50	637	11.50	11.38	52.75	—	—	—	—
CR(N) 64-3-1 H	40	3	32.50	53.88	4.88	37.00	48.00	15.63	12.13	7.00	1.25	11.00	5.50	652	11.50	11.38	53.38	—	—	—	—
CR(N) 64-3 H	40	3	32.50	53.88	4.88	37.00	48.00	15.63	12.13	7.00	1.25	11.00	5.50	652	11.50	11.38	53.38	—	—	—	—
CR(N) 64-4-2 H	40	3	35.75	57.13	4.88	40.25	51.25	15.63	12.13	7.00	1.25	11.00	5.50	731	11.50	11.38	56.63	—	—	—	—
CR(N) 64-4-1 H	50	3	35.75	60.88	4.88	40.75	52.75	16.50	14.63	8.00	0.25	12.00	6.25	761	13.38	12.25	57.63	—	—	—	—
CR(N) 64-4 H	50	3	35.75	60.88	4.88	40.75	52.75	16.50	14.63	8.00	0.25	12.00	6.25	761	13.38	12.25	57.63	—	—	—	—
CR(N) 64-5-2 H	60	3	39.00	66.13	4.88	44.63	55.88	17.00	14.63	9.00	-0.75	11.25	7.00	950	15.13	11.63	62.75	—	—	—	—

Note: Terminal box is on top of motor on 3-phase up to 10 hp. All other motors have terminal box on the side. Reference D2 dimension. Weights are based on pump with TEFC motor.

★ Add 0.67 inches for CRN-H dimensions.

Dimensional sketches G30 (3" x 2" x 13")



TM04 4872 0510

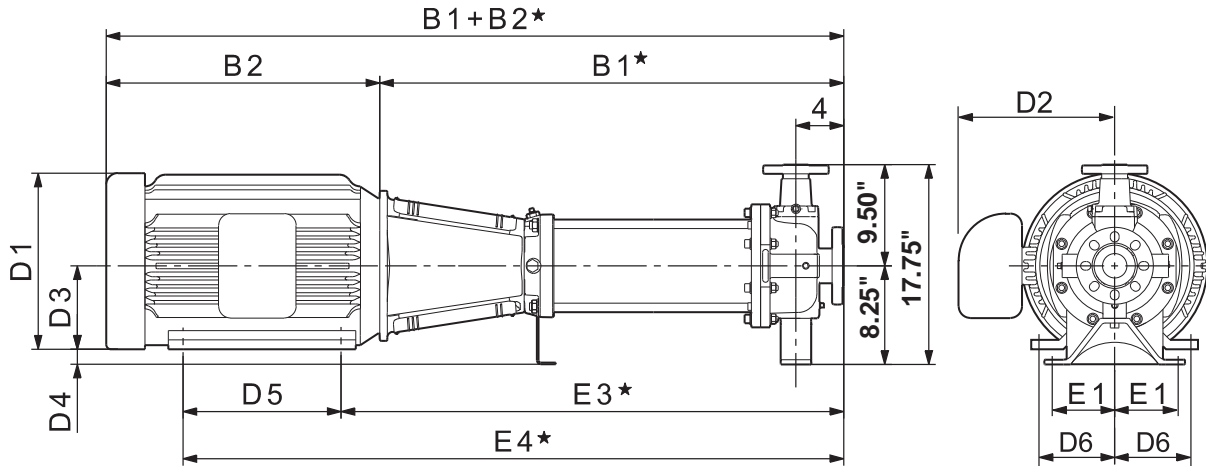
Dimensions and weights G30 (3" x 2" x 13")

Pump type	Power [hp]	Ph	Dimensions [inches]											Ship. weight [lbs]	Dimensions [inches]			Ship. weight [lbs]			
			TEFC												ODP				MLE		
			B1*	B1+B2*	E1	E3*	E4*	D1	D2	D3	D4	D5	D6		D1	D2	B1+B2*		D1	D2	B1+B2*
CR(N)(E) 64-1-1 H	10	1	26.00	41.75	4.88	29.25	34.75	11.50	10.38	5.25	4.75	5.50	4.25	365	—	—	—	—	—	—	—
		3	26.00	41.50	4.88	29.25	34.75	8.75	5.38	5.25	4.75	5.50	4.25	349	—	—	—	8.75	7.50	41.50	363
CR(N) 64-1 H	15	3	26.00	46.13	4.88	30.00	38.25	12.63	9.50	6.25	3.75	8.25	5.00	431	10.75	6.88	43.88	—	—	—	—
CR(N) 64-2-2 H	20	3	29.25	49.00	4.88	33.25	41.50	12.75	10.13	6.25	3.75	8.25	5.00	441	11.50	9.00	46.88	—	—	—	—
CR(N) 64-2-1 H	20	3	29.25	49.00	4.88	33.25	41.50	12.75	10.13	6.25	3.75	8.25	5.00	455	11.50	9.00	46.88	—	—	—	—
CR(N) 64-2 H	25	3	29.25	50.63	4.88	33.75	43.25	12.75	12.13	7.00	3.00	9.50	5.50	535	11.50	11.38	48.00	—	—	—	—
CR(N) 64-3-2 H	30	3	32.50	53.88	4.88	37.00	48.00	12.75	12.13	7.00	3.00	11.00	5.50	706	11.50	11.38	52.75	—	—	—	—
CR(N) 64-3-1 H	40	3	32.50	53.88	4.88	37.00	48.00	15.63	12.13	7.00	3.00	11.00	5.50	720	11.50	11.38	53.38	—	—	—	—
CR(N) 64-3 H	40	3	32.50	53.88	4.88	37.00	48.00	15.63	12.13	7.00	3.00	11.00	5.50	720	11.50	11.38	53.38	—	—	—	—
CR(N) 64-4-2 H	40	3	35.75	57.13	4.88	40.25	51.25	15.63	12.13	7.00	3.00	11.00	5.50	731	11.50	11.38	56.63	—	—	—	—
CR(N) 64-4-1 H	50	3	35.75	60.88	4.88	40.75	52.75	16.50	14.63	8.00	2.00	12.00	6.25	761	13.38	12.25	57.63	—	—	—	—
CR(N) 64-4 H	50	3	35.75	60.88	4.88	40.75	52.75	16.50	14.63	8.00	2.00	12.00	6.25	761	13.38	12.25	57.63	—	—	—	—
CR(N) 64-5-2 H	60	3	39.00	66.13	4.88	44.63	55.88	17.00	14.63	9.00	1.00	11.25	7.00	950	15.13	11.63	62.75	—	—	—	—

Note: Terminal box is on top of motor on 3-phase up to 10 hp. All other motors have terminal box on the side. Reference D2 dimension. Weights are based on pump with TEFC motor.

★ Add 0.67 inches for CRN-H dimensions.

Dimensional sketches G60 (3" x 2" x 8", 3" x 2" x 10")



TM04 4872 0510

Dimensions and weights G60 (3" x 2" x 8", 3" x 2" x 10")

Pump type	Power [hp]	Ph	Dimensions [inches]											Ship. weight [lbs]	Dimensions [inches]			Ship. weight [lbs]			
			TEFC												ODP				MLE		
			B1*	B1+B2*	E1	E3*	E4*	D1	D2	D3	D4	D5	D6		D1	D2	B1+B2*		D1	D2	B1+B2*
CR(N)(E) 64-1-1 H	10	1	26.00	41.75	4.88	29.25	34.75	11.50	10.38	5.25	3.00	5.50	4.25	338	—	—	—	—	—	—	—
		3	26.00	41.50	4.88	29.25	34.75	8.75	5.38	5.25	3.00	5.50	4.25	322	—	—	—	8.75	7.50	41.50	336
CR(N) 64-1 H	15	3	26.00	46.13	4.88	30.00	38.25	12.63	9.50	6.25	2.00	8.25	5.00	404	10.75	6.88	43.88	—	—	—	—
CR(N) 64-2-2 H	20	3	29.25	49.00	4.88	33.25	41.50	12.75	10.13	6.25	2.00	8.25	5.00	414	11.50	9.00	46.88	—	—	—	—
CR(N) 64-2-1 H	20	3	29.25	49.00	4.88	33.25	41.50	12.75	10.13	6.25	2.00	8.25	5.00	428	11.50	9.00	46.88	—	—	—	—
CR(N) 64-2 H	25	3	29.25	50.63	4.88	33.75	43.25	12.75	12.13	7.00	1.25	9.50	5.50	508	11.50	11.38	48.00	—	—	—	—
CR(N) 64-3-2 H	30	3	32.50	53.88	4.88	37.00	48.00	12.75	12.13	7.00	1.25	11.00	5.50	679	11.50	11.38	52.75	—	—	—	—
CR(N) 64-3-1 H	40	3	32.50	53.88	4.88	37.00	48.00	15.63	12.13	7.00	1.25	11.00	5.50	694	11.50	11.38	53.38	—	—	—	—
CR(N) 64-3 H	40	3	32.50	53.88	4.88	37.00	48.00	15.63	12.13	7.00	1.25	11.00	5.50	694	11.50	11.38	53.38	—	—	—	—
CR(N) 64-4-2 H	40	3	35.75	57.13	4.88	40.25	51.25	15.63	12.13	7.00	1.25	11.00	5.50	731	11.50	11.38	56.63	—	—	—	—
CR(N) 64-4-1 H	50	3	35.75	60.88	4.88	40.75	52.75	16.50	14.63	8.00	0.25	12.00	6.25	761	13.38	12.25	57.63	—	—	—	—
CR(N) 64-4 H	50	3	35.75	60.88	4.88	40.75	52.75	16.50	14.63	8.00	0.25	12.00	6.25	761	13.38	12.25	57.63	—	—	—	—
CR(N) 64-5-2 H	60	3	39.00	66.13	4.88	44.63	55.88	17.00	14.63	9.00	-0.75	11.25	7.00	950	15.13	11.63	62.75	—	—	—	—

Note: Terminal box is on top of motor on 3-phase up to 10 hp. All other motors have terminal box on the side. Reference D2 dimension. Weights are based on pump with TEFC motor.

★ Add 0.67 inches for CRN-H dimensions.