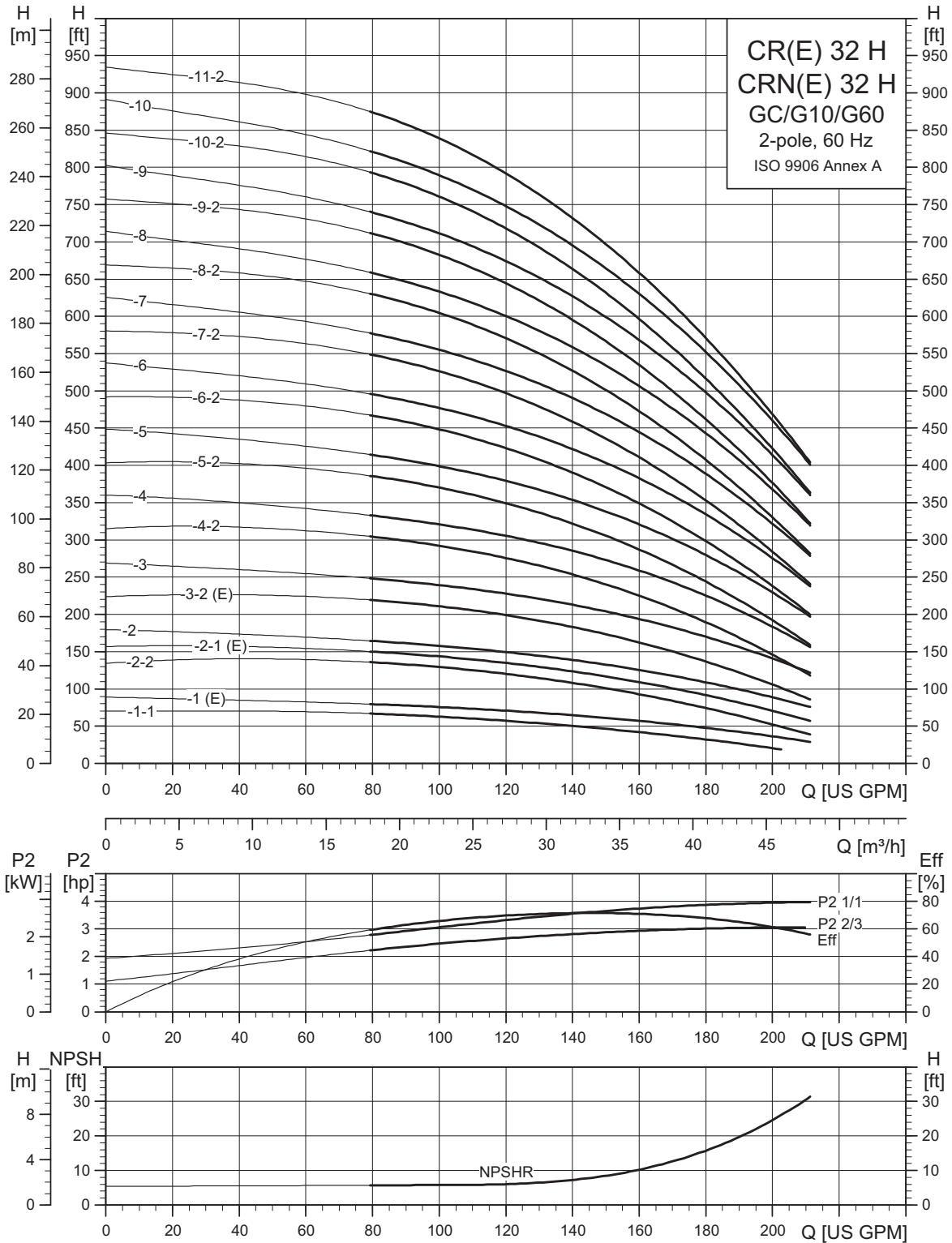
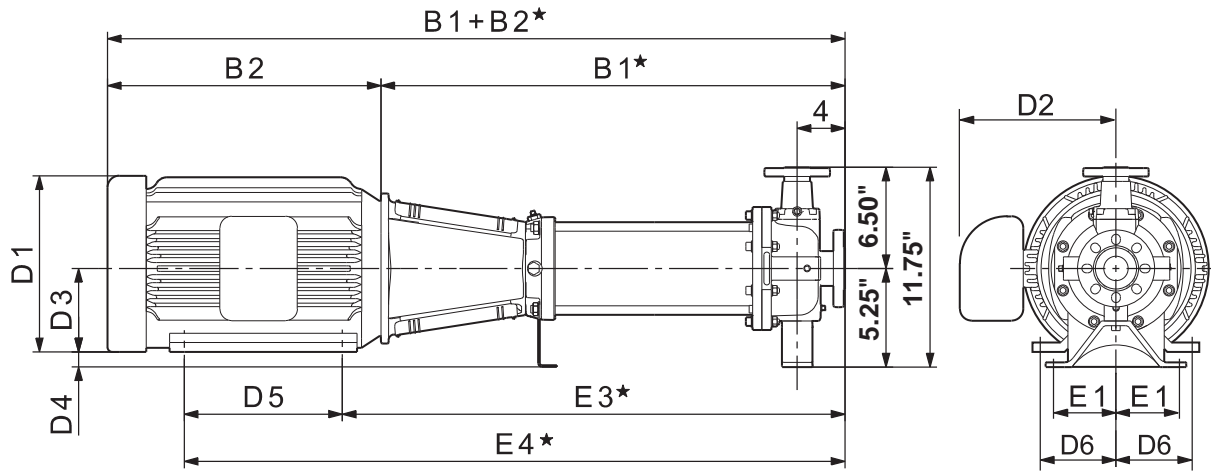


CR, CRE 32 H GC/G10/G60



TM04 6294-5110

Dimensional sketches GC (3" x 2" x 6")



TM04 4872 1010

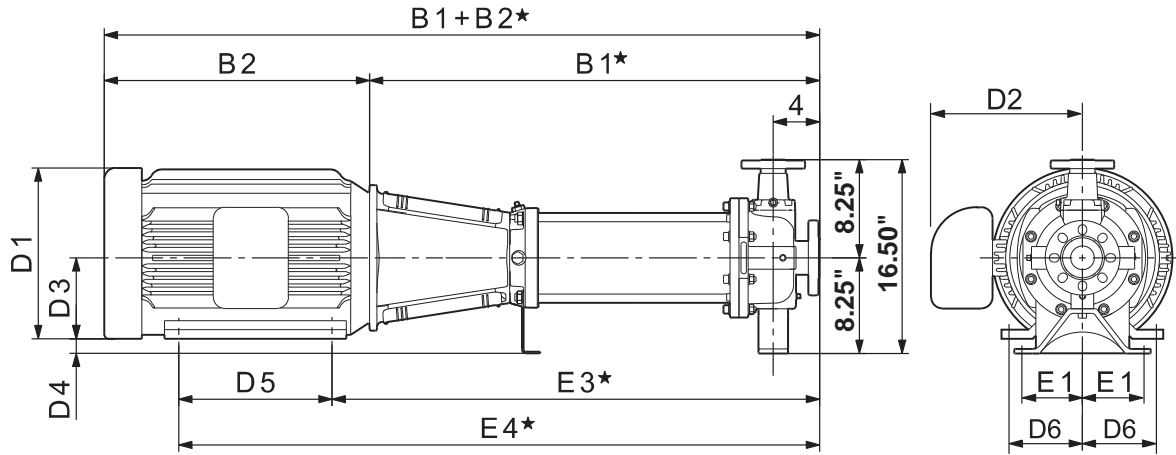
Dimensions and weights GC (3" x 2" x 6")

Pump type	Power [hp]	Ph	Dimensions [inches]											Ship. weight [lbs]	Dimensions [inches]			Ship. weight [lbs]			
			TEFC												ODP				MLE		
			B1*	B1+B2*	E1	E3*	E4*	D1	D2	D3	D4	D5	D6		D1	D2	B1+B2*		D1	D2	B1+B2*
CR(N) 32-1-1 H	5.00	1	26.25	41.50	3.00	28.75	34.25	10.63	7.50	5.25	0.00	5.50	3.75	238	—	—	—	—	—	—	—
		3	26.25	41.75	3.00	28.75	33.25	8.75	5.38	4.50	0.75	4.50	3.75	202	—	—	—	—	—	—	—
CR(N)(E) 32-1 H	5.00	1	26.25	41.50	3.00	28.75	34.25	10.63	7.50	5.25	0.00	5.50	3.75	261	—	—	—	—	—	—	—
		3	26.25	41.75	3.00	28.75	33.25	8.75	5.38	4.50	0.75	4.50	3.75	250	—	—	—	8.75	7.50	41.75	243
CR(N) 32-2-2 H	7.50	1	29.00	44.25	3.00	32.25	37.75	10.25	7.63	5.25	0.00	5.50	4.25	278	—	—	—	—	—	—	—
		3	29.00	44.50	3.00	32.25	37.75	8.75	5.38	5.25	0.00	5.50	4.25	262	—	—	—	—	—	—	—
CR(N)(E) 32-2-1 H	7.50	1	29.00	44.25	3.00	32.25	37.75	10.25	7.63	5.25	0.00	5.50	4.25	278	—	—	—	—	—	—	—
		3	29.00	44.50	3.00	32.25	37.75	8.75	5.38	5.25	0.00	5.50	4.25	262	—	—	—	8.75	7.50	44.50	275
CR(N) 32-2 H	10.00	1	29.00	44.88	3.00	32.25	37.75	11.50	10.38	5.25	0.00	5.50	4.25	278	—	—	—	—	—	—	—
		3	29.00	44.50	3.00	32.25	37.75	8.75	5.38	5.25	0.00	5.50	4.25	262	—	—	—	—	—	—	—
CR(N)(E) 32-3-2 H	10.00	1	31.75	47.63	3.00	35.00	40.50	11.50	10.38	5.25	0.00	5.50	4.25	328	—	—	—	—	—	—	—
		3	31.75	47.25	3.00	35.00	40.50	8.75	5.38	5.25	0.00	5.50	4.25	269	—	—	—	8.75	7.50	47.25	287
CR(N) 32-3 H	15.00	3	31.75	52.00	3.00	35.75	44.00	12.63	9.50	6.25	-1.00	8.25	5.00	370	10.75	6.88	49.75	—	—	—	—
CR(N) 32-4-2 H	15.00	3	34.50	54.75	3.00	38.50	46.75	12.63	9.50	6.25	-1.00	8.25	5.00	377	10.75	6.88	52.50	—	—	—	—
CR(N) 32-4 H	20.00	3	34.50	54.25	3.00	38.50	46.75	12.75	10.13	6.25	-1.00	8.25	5.00	377	11.50	9.00	52.25	—	—	—	—
CR(N) 32-5-2 H	20.00	3	37.25	57.00	3.00	41.25	49.50	12.75	10.13	6.25	-1.00	8.25	5.00	398	11.50	9.00	55.00	—	—	—	—
CR(N) 32-5 H	20.00	3	37.25	57.00	3.00	41.25	49.50	12.75	10.13	6.25	-1.00	8.25	5.00	398	11.50	9.00	55.00	—	—	—	—
CR(N) 32-6-2 H	25.00	3	40.00	61.50	3.00	44.50	54.00	12.75	12.13	7.00	-1.75	9.50	5.50	553	11.50	11.38	58.88	—	—	—	—
CR(N) 32-6 H	25.00	3	40.00	61.50	3.00	44.50	54.00	12.75	12.13	7.00	-1.75	9.50	5.50	553	11.50	11.38	58.88	—	—	—	—
CR(N) 32-7-2 H	30.00	3	42.75	64.25	3.00	47.25	58.25	12.75	12.13	7.00	-1.75	11.00	5.50	560	11.50	11.38	63.13	—	—	—	—
CR(N) 32-7 H	30.00	3	42.75	64.25	3.00	47.25	58.25	12.75	12.13	7.00	-1.75	11.00	5.50	721	11.50	11.38	63.13	—	—	—	—
CR(N) 32-8-2 H	30.00	3	45.50	67.00	3.00	50.00	61.00	12.75	12.13	7.00	-1.75	11.00	5.50	734	11.50	11.38	65.88	—	—	—	—
CR(N) 32-8 H	40.00	3	45.50	67.00	3.00	50.00	61.00	15.63	12.13	7.00	-1.75	11.00	5.50	734	11.50	11.38	66.50	—	—	—	—
CR(N) 32-9-2 H	40.00	3	48.25	69.75	3.00	52.75	63.75	15.63	12.13	7.00	-1.75	11.00	5.50	765	11.50	11.38	69.25	—	—	—	—
CR(N) 32-9 H	40.00	3	48.25	69.75	3.00	52.75	63.75	15.63	12.13	7.00	-1.75	11.00	5.50	765	11.50	11.38	69.25	—	—	—	—
CR(N) 32-10-2 H	40.00	3	51.00	72.50	3.00	55.50	66.50	15.63	12.13	7.00	-1.75	11.00	5.50	772	11.50	11.38	72.00	—	—	—	—
CR(N) 32-10 H	40.00	3	51.00	72.50	3.00	55.50	66.50	15.63	12.13	7.00	-1.75	11.00	5.50	772	11.50	11.38	72.00	—	—	—	—
CR(N) 32-11-2 H	50.00	3	53.75	79.00	3.00	58.75	70.75	16.50	14.63	8.00	-2.75	12.00	6.25	780	13.38	12.25	75.75	—	—	—	—

Note: Terminal box is on top of motor on 3-phase up to 10 hp. All other motors have terminal box on the side. Reference D2 dimension. Weights are based on pump with TEFC motor.

★ Add 0.67 inches for CRN-H dimensions.

Dimensional sketches G10 (3" x 2" x 6")



TM04.4872.1010

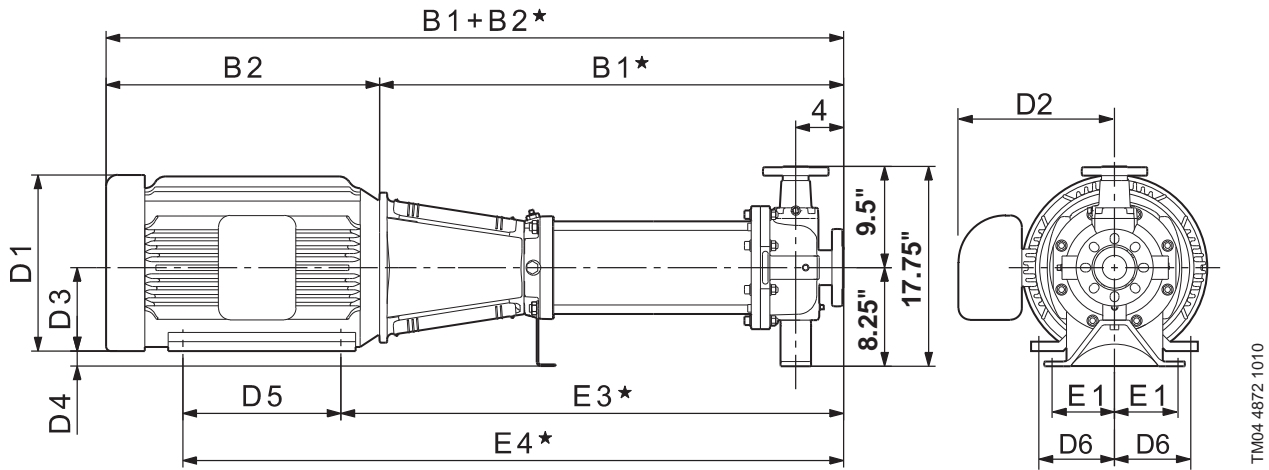
Dimensions and weights G10 (3" x 2" x 6")

Pump type	Power [hp]	Ph	Dimensions [inches]										Ship. weight [lbs]	Dimensions [inches]			Ship. weight [lbs]				
			TEFC											ODP				MLE			
			B1*	B1+B2*	E1	E3*	E4*	D1	D2	D3	D4	D5		D6	D1	D2		B1+B2*	D1	D2	B1+B2*
CR(N) 32-1-1 H	5.00	1	26.25	41.50	4.88	28.75	34.25	10.63	7.50	5.25	3.00	5.50	3.75	238	—	—	—	—	—	—	—
		3	26.25	41.75	4.88	28.75	33.25	8.75	5.38	4.50	3.75	4.50	3.75	202	—	—	—	—	—	—	—
CR(N)(E) 32-1 H	5.00	1	26.25	41.50	4.88	28.75	34.25	10.63	7.50	5.25	3.00	5.50	3.75	261	—	—	—	—	—	—	—
		3	26.25	41.75	4.88	28.75	33.25	8.75	5.38	4.50	3.75	4.50	3.75	250	—	—	—	8.75	7.50	41.75	243
CR(N) 32-2-2 H	7.50	1	29.00	44.25	4.88	32.25	37.75	10.25	7.63	5.25	3.00	5.50	4.25	278	—	—	—	—	—	—	—
		3	29.00	44.50	4.88	32.25	37.75	8.75	5.38	5.25	3.00	5.50	4.25	262	—	—	—	—	—	—	—
CR(N)(E) 32-2-1 H	7.50	1	29.00	44.25	4.88	32.25	37.75	10.25	7.63	5.25	3.00	5.50	4.25	278	—	—	—	—	—	—	—
		3	29.00	44.50	4.88	32.25	37.75	8.75	5.38	5.25	3.00	5.50	4.25	262	—	—	—	8.75	7.50	44.50	275
CR(N) 32-2 H	10.00	1	29.00	44.88	4.88	32.25	37.75	11.50	10.38	5.25	3.00	5.50	4.25	278	—	—	—	—	—	—	—
		3	29.00	44.50	4.88	32.25	37.75	8.75	5.38	5.25	3.00	5.50	4.25	262	—	—	—	—	—	—	—
CR(N)(E) 32-3-2 H	10.00	1	31.75	47.63	4.88	35.00	40.50	11.50	10.38	5.25	3.00	5.50	4.25	328	—	—	—	—	—	—	—
		3	31.75	47.25	4.88	35.00	40.50	8.75	5.38	5.25	3.00	5.50	4.25	269	—	—	—	8.75	7.50	47.25	287
CR(N) 32-3 H	15.00	3	31.75	52.00	4.88	35.75	44.00	12.63	9.50	6.25	2.00	8.25	5.00	370	10.75	6.88	49.75	—	—	—	—
CR(N) 32-4-2 H	15.00	3	34.50	54.75	4.88	38.50	46.75	12.63	9.50	6.25	2.00	8.25	5.00	377	10.75	6.88	52.50	—	—	—	—
CR(N) 32-4 H	20.00	3	34.50	54.25	4.88	38.50	46.75	12.75	10.13	6.25	2.00	8.25	5.00	377	11.50	9.00	52.25	—	—	—	—
CR(N) 32-5-2 H	20.00	3	37.25	57.00	4.88	41.25	49.50	12.75	10.13	6.25	2.00	8.25	5.00	398	11.50	9.00	55.00	—	—	—	—
CR(N) 32-5 H	20.00	3	37.25	57.00	4.88	41.25	49.50	12.75	10.13	6.25	2.00	8.25	5.00	398	11.50	9.00	55.00	—	—	—	—
CR(N) 32-6-2 H	25.00	3	40.00	61.50	4.88	44.50	54.00	12.75	12.13	7.00	1.25	9.50	5.50	553	11.50	11.38	58.88	—	—	—	—
CR(N) 32-6 H	25.00	3	40.00	61.50	4.88	44.50	54.00	12.75	12.13	7.00	1.25	9.50	5.50	553	11.50	11.38	58.88	—	—	—	—
CR(N) 32-7-2 H	30.00	3	42.75	64.25	4.88	47.25	58.25	12.75	12.13	7.00	1.25	11.00	5.50	560	11.50	11.38	63.13	—	—	—	—
CR(N) 32-7 H	30.00	3	42.75	64.25	4.88	47.25	58.25	12.75	12.13	7.00	1.25	11.00	5.50	721	11.50	11.38	63.13	—	—	—	—
CR(N) 32-8-2 H	30.00	3	45.50	67.00	4.88	50.00	61.00	12.75	12.13	7.00	1.25	11.00	5.50	734	11.50	11.38	65.88	—	—	—	—
CR(N) 32-8 H	40.00	3	45.50	67.00	4.88	50.00	61.00	15.63	12.13	7.00	1.25	11.00	5.50	734	11.50	11.38	66.50	—	—	—	—
CR(N) 32-9-2 H	40.00	3	48.25	69.75	4.88	52.75	63.75	15.63	12.13	7.00	1.25	11.00	5.50	765	11.50	11.38	69.25	—	—	—	—
CR(N) 32-9 H	40.00	3	48.25	69.75	4.88	52.75	63.75	15.63	12.13	7.00	1.25	11.00	5.50	765	11.50	11.38	69.25	—	—	—	—
CR(N) 32-10-2 H	40.00	3	51.00	72.50	4.88	55.50	66.50	15.63	12.13	7.00	1.25	11.00	5.50	772	11.50	11.38	72.00	—	—	—	—
CR(N) 32-10 H	40.00	3	51.00	72.50	4.88	55.50	66.50	15.63	12.13	7.00	1.25	11.00	5.50	772	11.50	11.38	72.00	—	—	—	—
CR(N) 32-11-2 H	50.00	3	53.75	79.00	4.88	58.75	70.75	16.50	14.63	8.00	0.25	12.00	6.25	780	13.38	12.25	75.75	—	—	—	—

Note: Terminal box is on top of motor on 3-phase up to 10 hp. All other motors have terminal box on the side. Reference D2 dimension. Weights are based on pump with TEFC motor.

★ Add 0.67 inches for CRN-H dimensions.

Dimensional sketches G60 (3" x 2" x 8", 3" x 2" x 10")



Dimensions and weights G60 (3" x 2" x 8", 3" x 2" x 10")

Pump type	Power [hp]	Ph	Dimensions [inches]										Ship. weight [lbs]	Dimensions [inches]			Ship. weight [lbs]				
			TEFC											ODP				MLE			
			B1*	B1+B2*	E1	E3*	E4*	D1	D2	D3	D4	D5		D6	D1	D2		B1+B2*	D1	D2	B1+B2*
CR(N) 32-1-1 H	5.00	1	26.25	41.50	4.88	28.75	34.25	10.63	7.50	5.25	3.00	5.50	3.75	299	—	—	—	—	—	—	—
		3	26.25	41.75	4.88	28.75	33.25	8.75	5.38	4.50	3.75	4.50	3.75	264	—	—	—	—	—	—	—
CR(N)(E) 32-1 H	5.00	1	26.25	41.50	4.88	28.75	34.25	10.63	7.50	5.25	3.00	5.50	3.75	322	—	—	—	—	—	—	—
		3	26.25	41.75	4.88	28.75	33.25	8.75	5.38	4.50	3.75	4.50	3.75	312	—	—	—	8.75	7.50	41.75	304
CR(N) 32-2-2 H	7.50	1	29.00	44.25	4.88	32.25	37.75	10.25	7.63	5.25	3.00	5.50	4.25	339	—	—	—	—	—	—	—
		3	29.00	44.50	4.88	32.25	37.75	8.75	5.38	5.25	3.00	5.50	4.25	323	—	—	—	—	—	—	—
CR(N)(E) 32-2-1 H	7.50	1	29.00	44.25	4.88	32.25	37.75	10.25	7.63	5.25	3.00	5.50	4.25	339	—	—	—	—	—	—	—
		3	29.00	44.50	4.88	32.25	37.75	8.75	5.38	5.25	3.00	5.50	4.25	323	—	—	—	8.75	7.50	44.50	337
CR(N) 32-2 H	10.00	1	29.00	44.88	4.88	32.25	37.75	11.50	10.38	5.25	3.00	5.50	4.25	339	—	—	—	—	—	—	—
		3	29.00	44.50	4.88	32.25	37.75	8.75	5.38	5.25	3.00	5.50	4.25	323	—	—	—	—	—	—	—
CR(N)(E) 32-3-2 H	10.00	1	31.75	47.63	4.88	35.00	40.50	11.50	10.38	5.25	3.00	5.50	4.25	389	—	—	—	—	—	—	—
		3	31.75	47.25	4.88	35.00	40.50	8.75	5.38	5.25	3.00	5.50	4.25	330	—	—	—	8.75	7.50	47.25	349
CR(N) 32-3 H	15.00	3	31.75	52.00	4.88	35.75	44.00	12.63	9.50	6.25	2.00	8.25	5.00	412	10.75	6.88	49.75	—	—	—	—
CR(N) 32-4-2 H	15.00	3	34.50	54.75	4.88	38.50	46.75	12.63	9.50	6.25	2.00	8.25	5.00	419	10.75	6.88	52.50	—	—	—	—
CR(N) 32-4 H	20.00	3	34.50	54.25	4.88	38.50	46.75	12.75	10.13	6.25	2.00	8.25	5.00	419	11.50	9.00	52.25	—	—	—	—
CR(N) 32-5-2 H	20.00	3	37.25	57.00	4.88	41.25	49.50	12.75	10.13	6.25	2.00	8.25	5.00	440	11.50	9.00	55.00	—	—	—	—
CR(N) 32-5 H	20.00	3	37.25	57.00	4.88	41.25	49.50	12.75	10.13	6.25	2.00	8.25	5.00	440	11.50	9.00	55.00	—	—	—	—
CR(N) 32-6-2 H	25.00	3	40.00	61.50	4.88	44.50	54.00	12.75	12.13	7.00	1.25	9.50	5.50	553	11.50	11.38	58.88	—	—	—	—
CR(N) 32-6 H	25.00	3	40.00	61.50	4.88	44.50	54.00	12.75	12.13	7.00	1.25	9.50	5.50	553	11.50	11.38	58.88	—	—	—	—
CR(N) 32-7-2 H	30.00	3	42.75	64.25	4.88	47.25	58.25	12.75	12.13	7.00	1.25	11.00	5.50	560	11.50	11.38	63.13	—	—	—	—
CR(N) 32-7 H	30.00	3	42.75	64.25	4.88	47.25	58.25	12.75	12.13	7.00	1.25	11.00	5.50	721	11.50	11.38	63.13	—	—	—	—
CR(N) 32-8-2 H	30.00	3	45.50	67.00	4.88	50.00	61.00	12.75	12.13	7.00	1.25	11.00	5.50	734	11.50	11.38	65.88	—	—	—	—
CR(N) 32-8 H	40.00	3	45.50	67.00	4.88	50.00	61.00	15.63	12.13	7.00	1.25	11.00	5.50	734	11.50	11.38	66.50	—	—	—	—
CR(N) 32-9-2 H	40.00	3	48.25	69.75	4.88	52.75	63.75	15.63	12.13	7.00	1.25	11.00	5.50	765	11.50	11.38	69.25	—	—	—	—
CR(N) 32-9 H	40.00	3	48.25	69.75	4.88	52.75	63.75	15.63	12.13	7.00	1.25	11.00	5.50	765	11.50	11.38	69.25	—	—	—	—
CR(N) 32-10-2 H	40.00	3	51.00	72.50	4.88	55.50	66.50	15.63	12.13	7.00	1.25	11.00	5.50	772	11.50	11.38	72.00	—	—	—	—
CR(N) 32-10 H	40.00	3	51.00	72.50	4.88	55.50	66.50	15.63	12.13	7.00	1.25	11.00	5.50	772	11.50	11.38	72.00	—	—	—	—
CR(N) 32-11-2 H	50.00	3	53.75	79.00	4.88	58.75	70.75	16.50	14.63	8.00	0.25	12.00	6.25	780	13.38	12.25	75.75	—	—	—	—

Note: Terminal box is on top of motor on 3-phase up to 10 hp. All other motors have terminal box on the side. Reference D2 dimension. Weights are based on pump with TEFC motor.

★ Add 0.67 inches for CRN-H dimensions.