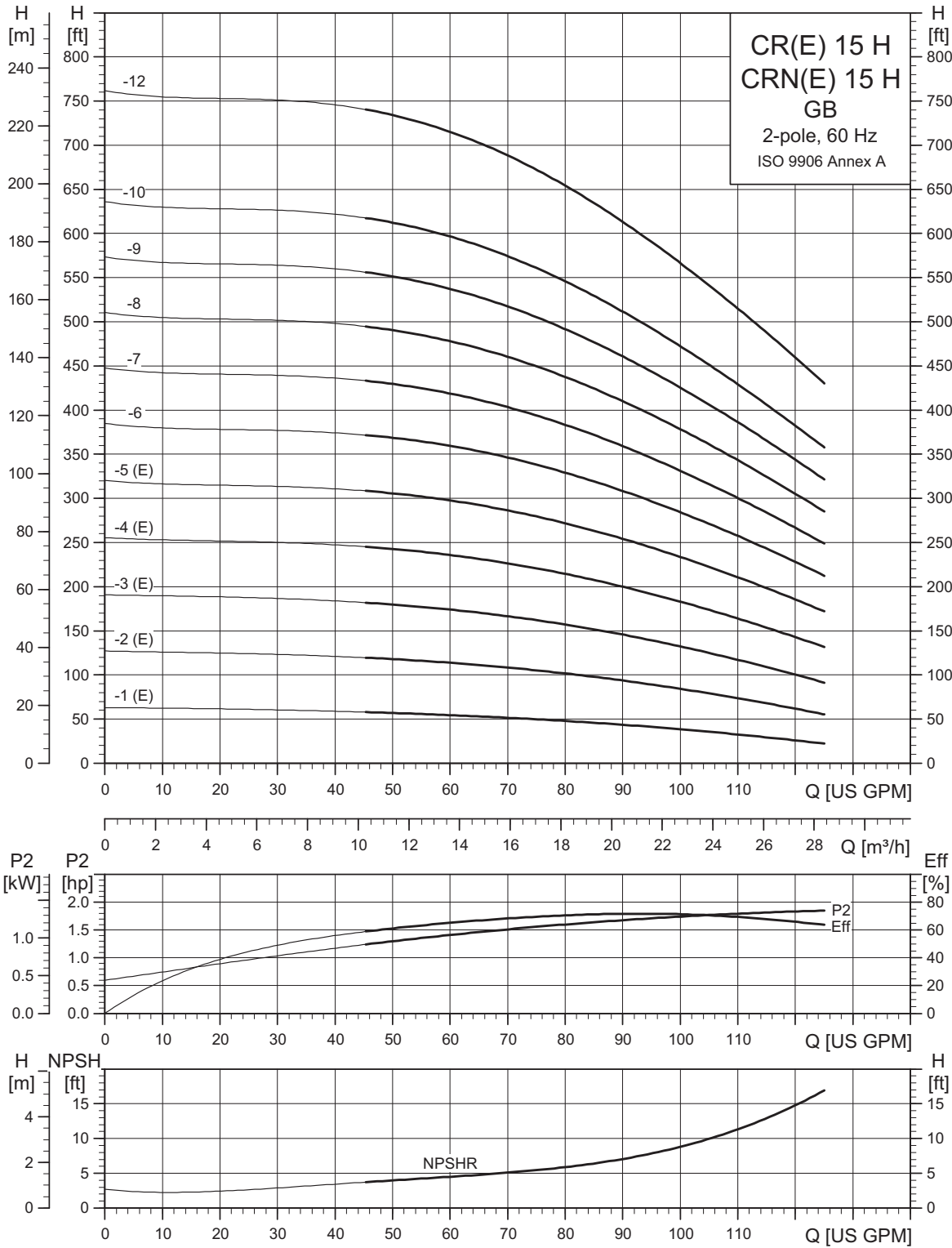
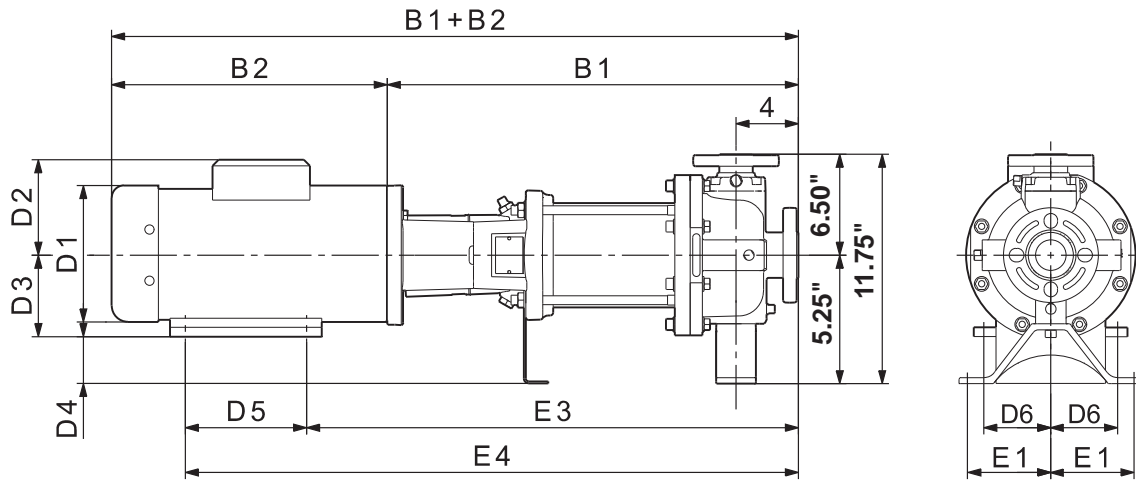


## CR, CRE 15 H GB



TM04 6287 5110

## Dimensional sketches GB (3" x 1.5" x 6", 3" x 1.5" x 8")



TM04 4818 0310

## Dimensions and weights GB (3" x 1.5" x 6", 3" x 1.5" x 8")

Pump type	Power [hp]	Ph	Dimensions [inches]												Ship. weight [lbs]	Dimensions [inches]			Ship. weight [lbs]			
			TEFC													ODP				MLE		
			B1	B1+B2	E1	E3	E4	D1	D2	D3	D4	D5	D6	D1		D2	B1+B2	D1		D2	B1+B2	
CR(N)(E) 15-1 H	2.00	1	19.13	31.75	3.00	21.75	24.75	7.25	5.75	3.50	1.75	3.00	2.50	97	—	—	—	—	—	—		
		3	19.13	30.63	3.00	21.75	24.75	7.13	4.38	3.50	1.75	3.00	2.50	86	—	—	—	7.13	6.63	32.13	99	
CR(N)(E) 15-2 H	5.00	1	21.75	37.00	3.00	24.25	29.75	10.63	7.50	5.25	0.00	5.50	3.75	257	—	—	—	—	—	—		
		3	21.75	37.25	3.00	24.25	28.75	8.75	5.38	4.50	0.75	4.50	3.75	251	—	—	—	8.75	7.50	37.25	156	
CR(N)(E) 15-3 H	7.50	1	23.50	38.88	3.00	26.75	32.25	10.25	7.63	5.25	0.00	5.50	4.25	260	—	—	—	—	—	—		
		3	23.50	39.00	3.00	26.75	32.25	8.75	5.38	5.25	0.00	5.50	4.25	253	—	—	—	8.75	7.50	39.00	273	
CR(N)(E) 15-4 H	7.50	1	25.75	41.00	3.00	29.00	34.50	10.25	7.63	5.25	0.00	5.50	4.25	275	—	—	—	—	—	—		
		3	25.75	41.25	3.00	29.00	34.50	8.75	5.38	5.25	0.00	5.50	4.25	262	—	—	—	8.75	7.50	41.25	275	
CR(N)(E) 15-5 H	10.00	1	27.50	43.38	3.00	30.75	36.25	11.50	10.38	5.25	0.00	5.50	4.25	321	—	—	—	—	—	—		
		3	27.50	43.00	3.00	30.75	36.25	8.75	5.38	5.25	0.00	5.50	4.25	264	—	—	—	8.75	7.50	43.00	284	
CR(N) 15-6 H	15.00	3	29.25	49.50	3.00	33.25	41.50	12.63	9.50	6.25	-1.00	8.25	5.00	268	10.75	6.88	47.25	—	—	—	—	
CR(N) 15-7 H	15.00	3	31.88	52.00	3.00	35.88	44.13	12.63	9.50	6.25	-1.00	8.25	5.00	359	10.75	6.88	49.75	—	—	—	—	
CR(N) 15-8 H	15.00	3	33.63	53.75	3.00	37.63	45.88	12.63	9.50	6.25	-1.00	8.25	5.00	361	10.75	6.88	51.50	—	—	—	—	
CR(N) 15-9 H	15.00	3	35.38	55.63	3.00	39.38	47.63	12.63	9.50	6.25	-1.00	8.25	5.00	367	10.75	6.88	53.25	—	—	—	—	
CR(N) 15-10 H	20.00	3	37.13	56.88	3.00	41.13	49.38	12.75	10.13	6.25	-1.00	8.25	5.00	383	11.50	9.00	54.88	—	—	—	—	
CR(N) 15-12 H	25.00	3	39.88	61.38	3.00	44.38	53.88	12.75	12.13	7.00	-1.75	9.50	5.50	466	11.50	11.38	58.63	—	—	—	—	

Note: Terminal box is on top of motor on 3-phase up to 10 hp. All other motors have terminal box on the side. Reference D2 dimension. Weights are based on pump with TEFC motor.