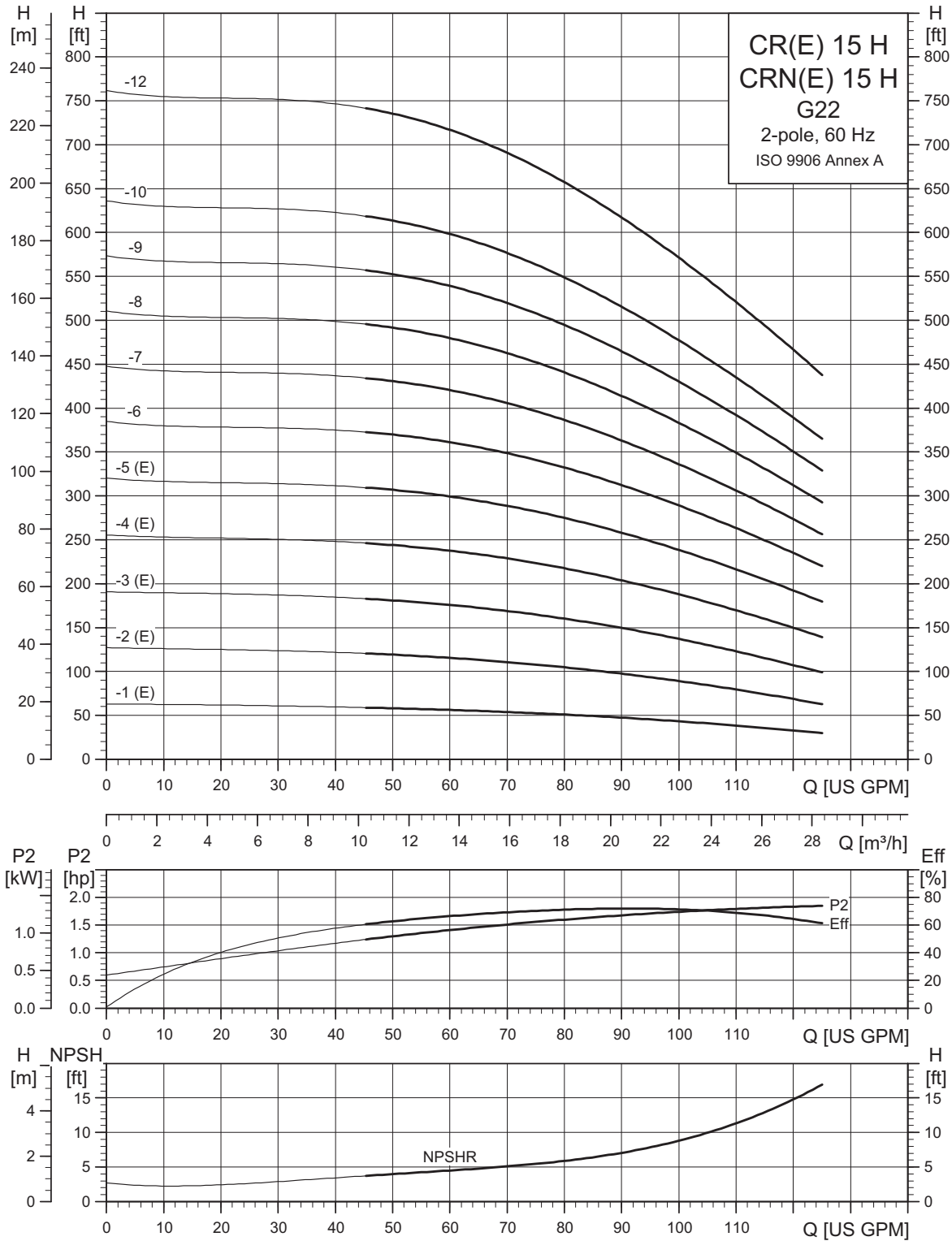
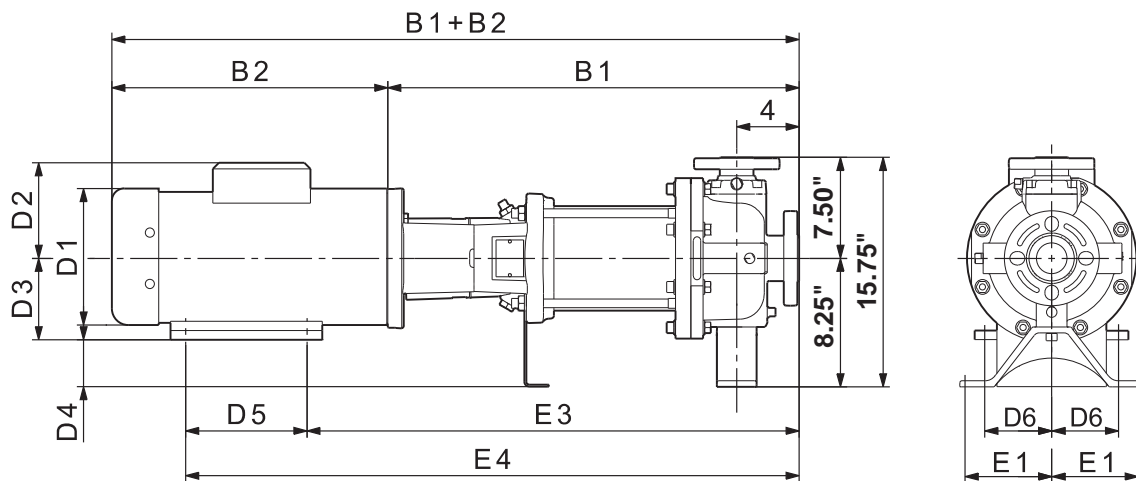


CR, CRE 15 H G22



TM04 6288 5110

Dimensional sketches G22 (2" x 2")



TM04 4871 0310

Dimensions and weights G22 (2" x 2")

Pump type	Power [hp]	Ph	Dimensions [inches]												Ship. weight [lbs]	Dimensions [inches]			Ship. weight [lbs]			
			TEFC													ODP				MLE		
			B1	B1+B2	E1	E3	E4	D1	D2	D3	D4	D5	D6	D1		D2	B1+B2	D1		D2	B1+B2	
CR(N)(E) 15-1 H	2.00	1	18.13	30.75	4.88	20.75	23.75	7.25	5.75	3.50	4.75	3.00	2.50	139	—	—	—	—	—	—		
		3	18.13	29.63	4.88	20.75	23.75	7.13	4.38	3.50	4.75	3.00	2.50	126	—	—	—	7.13	6.63	31.13	187	
CR(N)(E) 15-2 H	5.00	1	20.75	36.00	4.88	23.25	28.75	10.63	7.50	5.25	3.00	5.50	3.75	205	—	—	—	—	—	—		
		3	20.75	36.25	4.88	23.25	27.75	8.75	5.38	4.50	3.75	4.50	3.75	174	—	—	—	8.75	7.50	36.25	242	
CR(N)(E) 15-3 H	7.50	1	22.50	37.75	4.88	25.75	31.25	10.25	7.63	5.25	3.00	5.50	4.25	207	—	—	—	—	—	—		
		3	22.50	38.00	4.88	25.75	31.25	8.75	5.38	5.25	3.00	5.50	4.25	176	—	—	—	8.75	7.50	38.00	273	
CR(N)(E) 15-4 H	7.50	1	24.75	40.00	4.88	28.00	33.50	10.25	7.63	5.25	3.00	5.50	4.25	231	—	—	—	—	—	—		
		3	24.75	40.25	4.88	28.00	33.50	8.75	5.38	5.25	3.00	5.50	4.25	203	—	—	—	8.75	7.50	40.25	275	
CR(N)(E) 15-5 H	10.00	1	26.50	42.38	4.88	29.75	35.25	11.50	10.38	5.25	3.00	5.50	4.25	357	—	—	—	—	—	—		
		3	26.50	42.00	4.88	29.75	35.25	8.75	5.38	5.25	3.00	5.50	4.25	238	—	—	—	8.75	7.50	42.00	285	
CR(N) 15-6 H	15.00	3	28.25	48.50	4.88	32.25	40.50	12.63	9.50	6.25	2.00	8.25	5.00	240	10.75	6.88	46.25	—	—	—	—	
CR(N) 15-7 H	15.00	3	30.75	51.00	4.88	34.75	43.00	12.63	9.50	6.25	2.00	8.25	5.00	377	10.75	6.88	48.75	—	—	—	—	
CR(N) 15-8 H	15.00	3	32.63	52.75	4.88	36.63	44.88	12.63	9.50	6.25	2.00	8.25	5.00	386	10.75	6.88	50.50	—	—	—	—	
CR(N) 15-9 H	15.00	3	34.38	54.50	4.88	38.38	46.63	12.63	9.50	6.25	2.00	8.25	5.00	392	10.75	6.88	52.25	—	—	—	—	
CR(N) 15-10 H	20.00	3	36.13	55.88	4.88	40.13	48.38	12.75	10.13	6.25	2.00	8.25	5.00	410	11.50	9.00	53.75	—	—	—	—	
CR(N) 15-12 H	25.00	3	38.88	60.25	4.88	43.38	52.88	12.75	12.13	7.00	1.25	9.50	5.50	498	11.50	11.38	57.63	—	—	—	—	

Note: Terminal box is on top of motor on 3-phase up to 10 hp. All other motors have terminal box on the side. Reference D2 dimension. Weights are based on pump with TEFC motor.