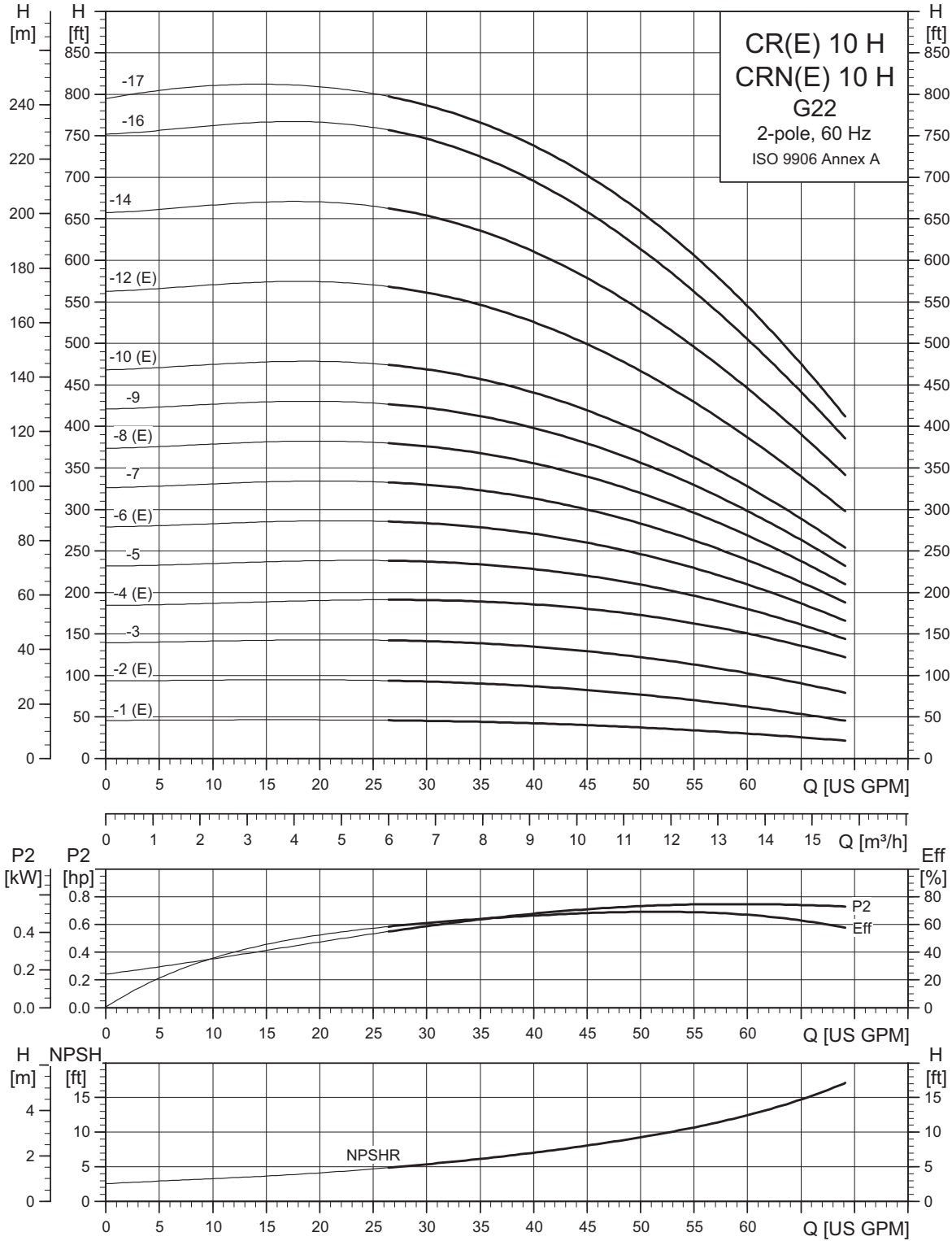
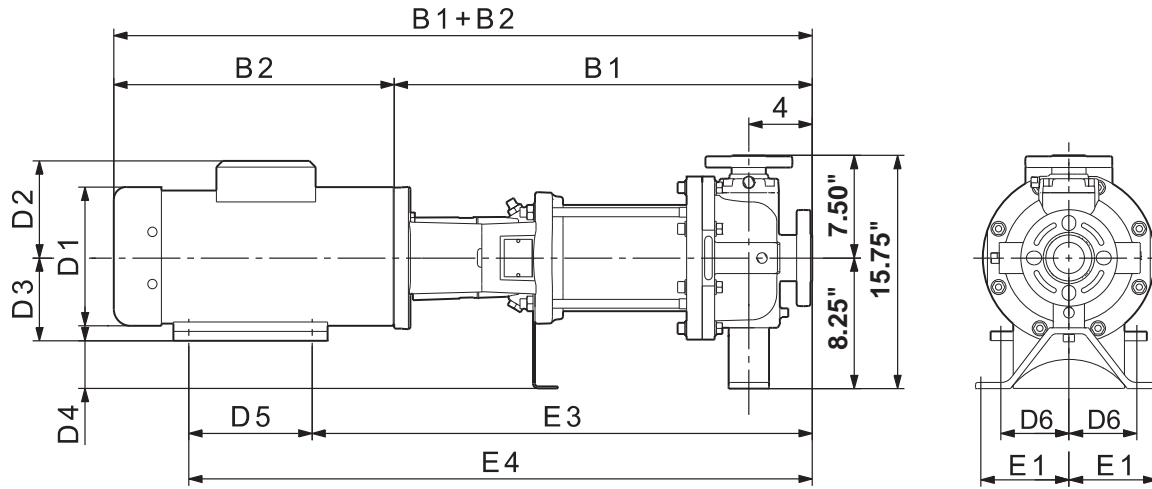


CR, CRE 10 H G22



TM04 6285 5110

Dimensional sketches G22 (2" x 2")



TM04 4871 0310

Dimensions and weights G22 (2" x 2")

Pump type	Power [hp]	Ph	Dimensions [inches]												Ship. weight [lbs]	Dimensions [inches]			Ship. weight [lbs]			
			TEFC													ODP				MLE		
			B1	B1+B2	E1	E3	E4	D1	D2	D3	D4	D5	D6	D1		D2	B1+B2	D1		D2	B1+B2	
CR(N)(E) 10-1 H	0.75 ¹⁾	1	17.00	26.88	4.88	19.63	22.63	6.25	5.25	3.50	4.75	3.00	2.50	115	—	—	—	5.63	5.63	26.00	156	
		3	17.00	24.63	4.88	19.63	22.63	5.63	4.63	3.50	4.75	3.00	2.50	106	—	—	—	7.13	6.63	29.88	169	
CR(N)(E) 10-2 H	1.50	1	17.00	28.63	4.88	19.63	22.63	7.25	5.75	3.50	4.75	3.00	2.50	130	—	—	—	—	—	—	—	
		3	17.00	25.75	4.88	19.63	22.63	5.63	4.63	3.50	4.75	3.00	2.50	123	—	—	—	7.13	6.63	29.88	172	
CR(N) 10-3 H	3.00	1	20.75	35.13	4.88	23.25	27.75	8.63	6.88	4.50	3.75	4.50	3.75	183	—	—	—	—	—	—	—	
		3	20.75	34.00	4.88	23.25	27.75	7.13	4.38	4.50	3.75	4.50	3.75	157	—	—	—	—	—	—	—	
CR(N)(E) 10-4 H	3.00	1	21.88	36.38	4.88	24.38	28.88	8.63	6.88	4.50	3.75	4.50	3.75	185	—	—	—	—	—	—	—	
		3	21.88	35.13	4.88	24.38	28.88	7.13	4.38	4.50	3.75	4.50	3.75	159	—	—	—	7.13	6.63	35.25	213	
CR(N) 10-5 H	5.00	1	23.13	38.38	4.88	25.63	31.13	10.63	7.50	5.25	3.00	5.50	3.75	213	—	—	—	—	—	—	—	
		3	23.13	38.63	4.88	25.63	30.13	8.75	5.38	4.50	3.75	4.50	3.75	182	—	—	—	—	—	—	—	
CR(N)(E) 10-6 H	5.00	1	24.25	39.50	4.88	26.75	32.25	10.63	7.50	5.25	3.00	5.50	3.75	212	—	—	—	—	—	—	—	
		3	24.25	39.75	4.88	26.75	31.25	8.75	5.38	4.50	3.75	4.50	3.75	181	—	—	—	8.75	7.50	39.75	249	
CR(N) 10-7 H	5.00	1	25.50	40.75	4.88	28.00	33.50	10.63	7.50	5.25	3.00	5.50	3.75	214	—	—	—	—	—	—	—	
		3	25.50	41.00	4.88	28.00	32.50	8.75	5.38	4.50	3.75	4.50	3.75	183	—	—	—	—	—	—	—	
CR(N)(E) 10-8 H	7.50	1	27.13	42.38	4.88	30.38	35.88	10.25	7.63	5.25	3.00	5.50	4.25	234	—	—	—	—	—	—	—	
		3	27.13	42.63	4.88	30.38	35.88	8.75	5.38	5.25	3.00	5.50	4.25	206	—	—	—	8.75	7.50	42.63	282	
CR(N) 10-9 H	7.50	1	28.25	43.50	4.88	31.50	37.00	10.25	7.63	5.25	3.00	5.50	4.25	236	—	—	—	—	—	—	—	
		3	28.25	43.75	4.88	31.50	37.00	8.75	5.38	5.25	3.00	5.50	4.25	208	—	—	—	—	—	—	—	
CR(N)(E) 10-10 H	7.50	1	29.50	44.75	4.88	32.75	38.25	10.25	7.63	5.25	3.00	5.50	4.25	238	—	—	—	—	—	—	—	
		3	29.50	45.00	4.88	32.75	38.25	8.75	5.38	5.25	3.00	5.50	4.25	211	—	—	—	8.75	7.50	45.00	286	
CR(N)(E) 10-12 H	10.00	1	31.75	47.63	4.88	35.00	40.50	11.50	10.38	5.25	3.00	5.50	4.25	370	—	—	—	—	—	—	—	
		3	31.75	47.25	4.88	35.00	40.50	8.75	5.38	5.25	3.00	5.50	4.25	251	—	—	—	8.75	7.50	47.38	315	
CR(N) 10-14 H	15.00	3	34.13	54.38	4.88	38.13	46.38	12.63	9.50	6.25	2.00	8.25	5.00	256	10.75	6.88	52.13	—	—	—	—	
CR(N) 10-16 H	15.00	3	37.25	57.50	4.88	41.25	49.50	12.63	9.50	6.25	2.00	8.25	5.00	399	10.75	6.88	55.25	—	—	—	—	
CR(N) 10-17 H	15.00	3	39.63	59.88	4.88	43.63	51.88	12.63	9.50	6.25	2.00	8.25	5.00	403	10.75	6.88	57.63	—	—	—	—	

Note: Terminal box is on top of motor on 3-phase up to 10 hp. All other motors have terminal box on the side. Reference D2 dimension. Weights are based on pump with TEFC motor.

¹⁾ CR(N)E 10-1 dimensions are for 1 hp motor.