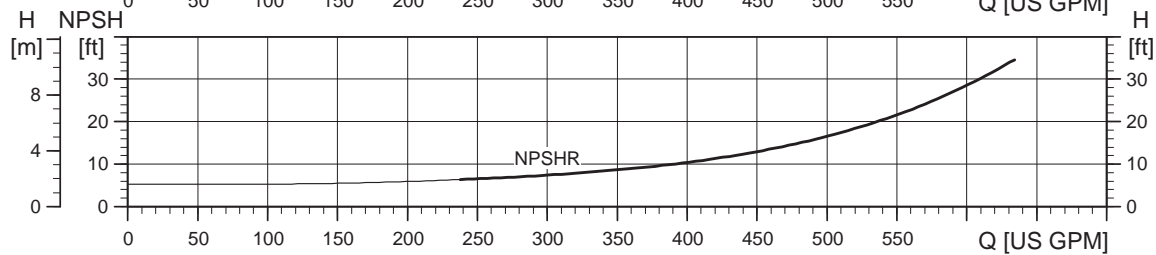
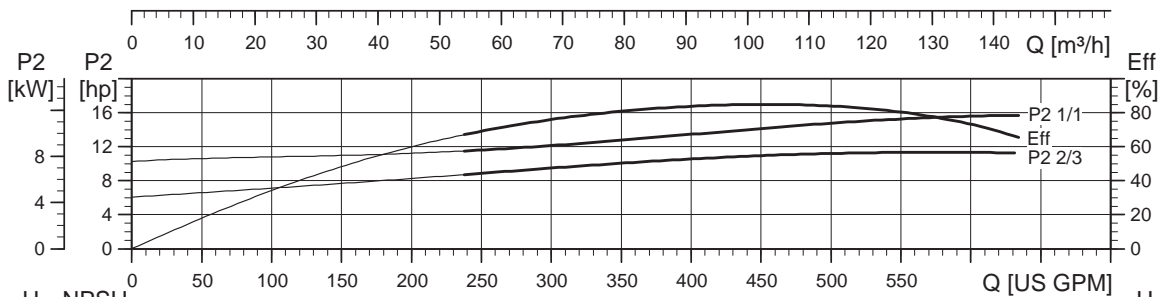
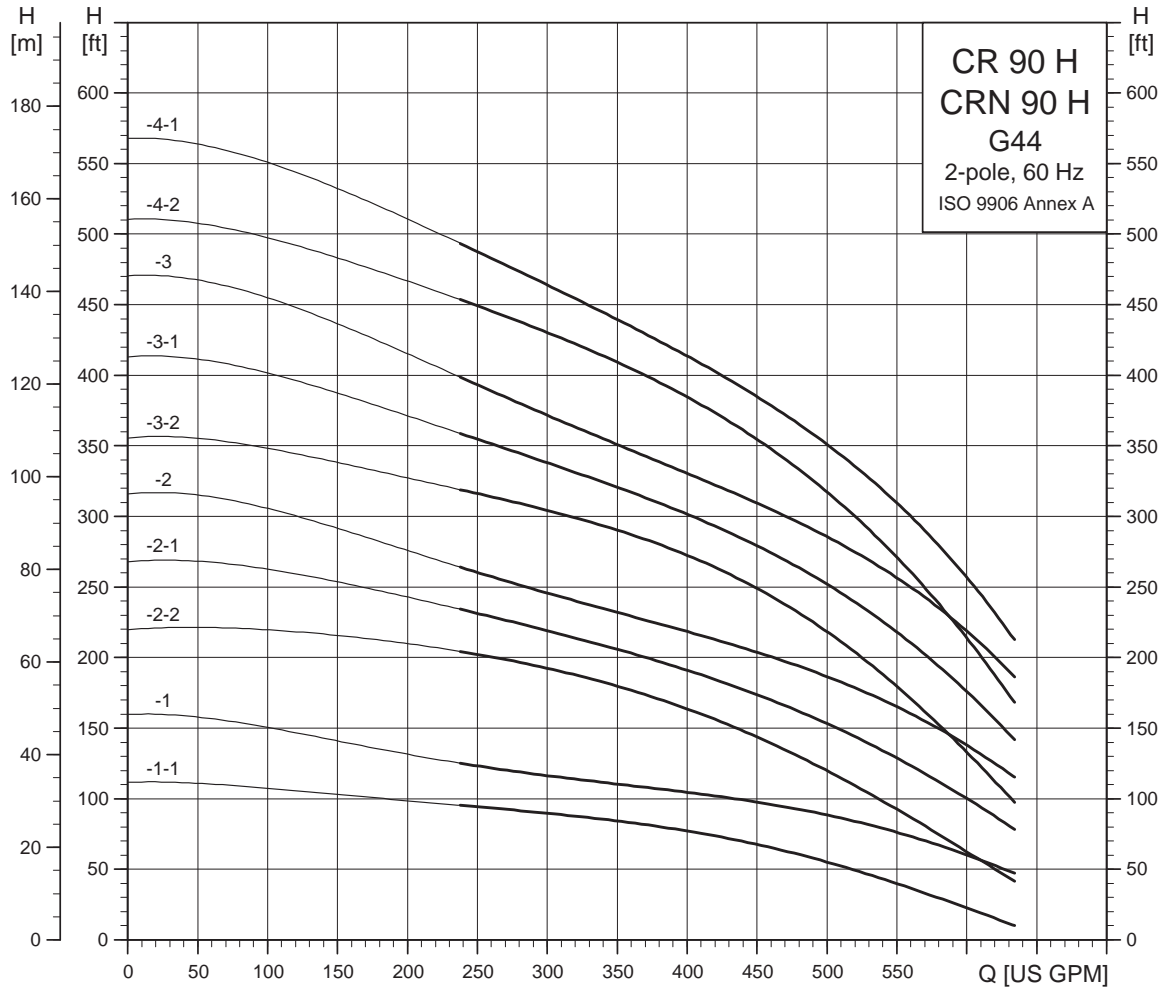
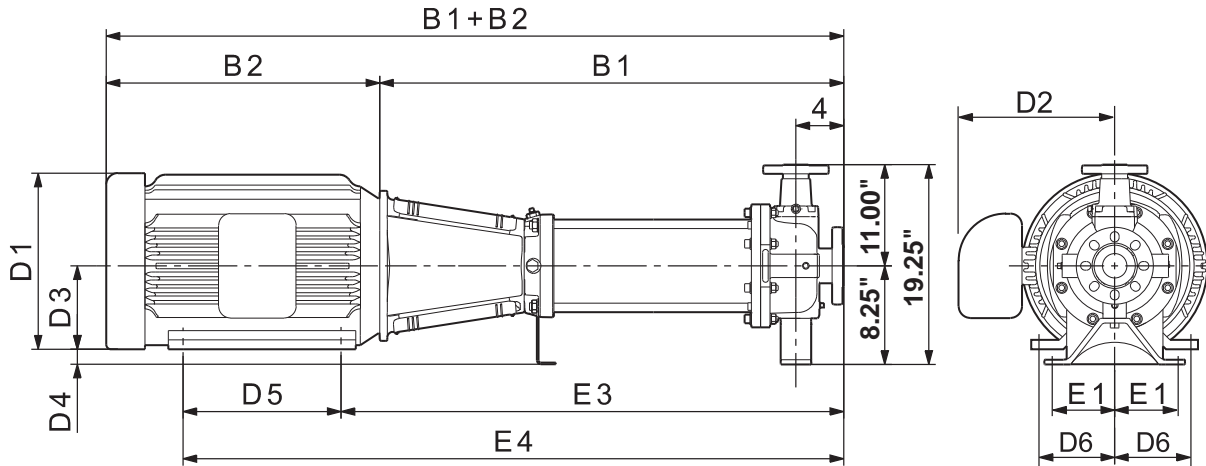


CR 90 H G44



TM04 6306 4610

Dimensional sketches G44 (4" x 4")



TM04 4872 0510

Dimensions and weights G44 (4" x 4")

Pump type	Power [hp]	Ph	Dimensions [inches]													Ship. weight [lbs]	Dimensions [inches]			Ship. weight [lbs]
			TEFC										ODP				MLE			
			B1	B1+B2	E1	E3	E4	D1	D2	D3	D4	D5	D6	D1	D2		B1+B2	D1	D2	
CR(N) 90-1-1 H	15	3	27.50	47.75	4.88	31.50	39.75	12.63	9.50	6.25	2.00	8.25	5.00	10.75	6.88	45.38	—	—	—	—
CR(N) 90-1 H	20	3	27.50	47.75	4.88	31.50	39.75	12.63	9.50	6.25	2.00	8.25	5.00	10.75	6.88	45.38	—	—	—	—
CR(N) 90-2-2 H	25	3	31.13	52.50	4.88	35.63	45.13	12.75	12.13	7.00	1.25	9.50	5.50	11.50	11.38	49.88	—	—	—	—
CR(N) 90-2-1 H	30	3	31.13	52.50	4.88	35.63	46.63	12.75	12.13	7.00	1.25	11.00	5.50	11.50	11.38	51.38	—	—	—	—
CR(N) 90-2 H	40	3	31.13	52.50	4.88	35.63	46.63	15.63	12.13	7.00	1.25	11.00	5.50	11.50	11.38	52.00	—	—	—	—
CR(N) 90-3-2 H	40	3	34.75	56.13	4.88	39.25	50.25	15.63	12.13	7.00	1.25	11.00	5.50	11.50	11.38	55.63	—	—	—	—
CR(N) 90-3-1 H	50	3	34.75	59.88	4.88	39.75	51.75	16.50	14.63	8.00	0.25	12.00	6.25	13.38	12.25	56.63	—	—	—	—
CR(N) 90-3 H	50	3	34.75	59.88	4.88	39.75	51.75	16.50	14.63	8.00	0.25	12.00	6.25	13.38	12.25	56.63	—	—	—	—
CR(N) 90-4-2 H	60	3	38.38	65.50	4.88	44.00	55.25	17.00	14.63	9.00	-0.75	11.25	7.00	15.13	11.63	62.13	—	—	—	—
CR(N) 90-4-1 H	60	3	38.38	65.50	4.88	44.00	55.25	17.00	14.63	9.00	-0.75	11.25	7.00	15.13	11.63	62.13	—	—	—	—

Note: Terminal box is on top of motor on 3-phase up to 10 hp. All other motors have terminal box on the side. Reference D2 dimension. Weights are based on pump with TEFC motor.