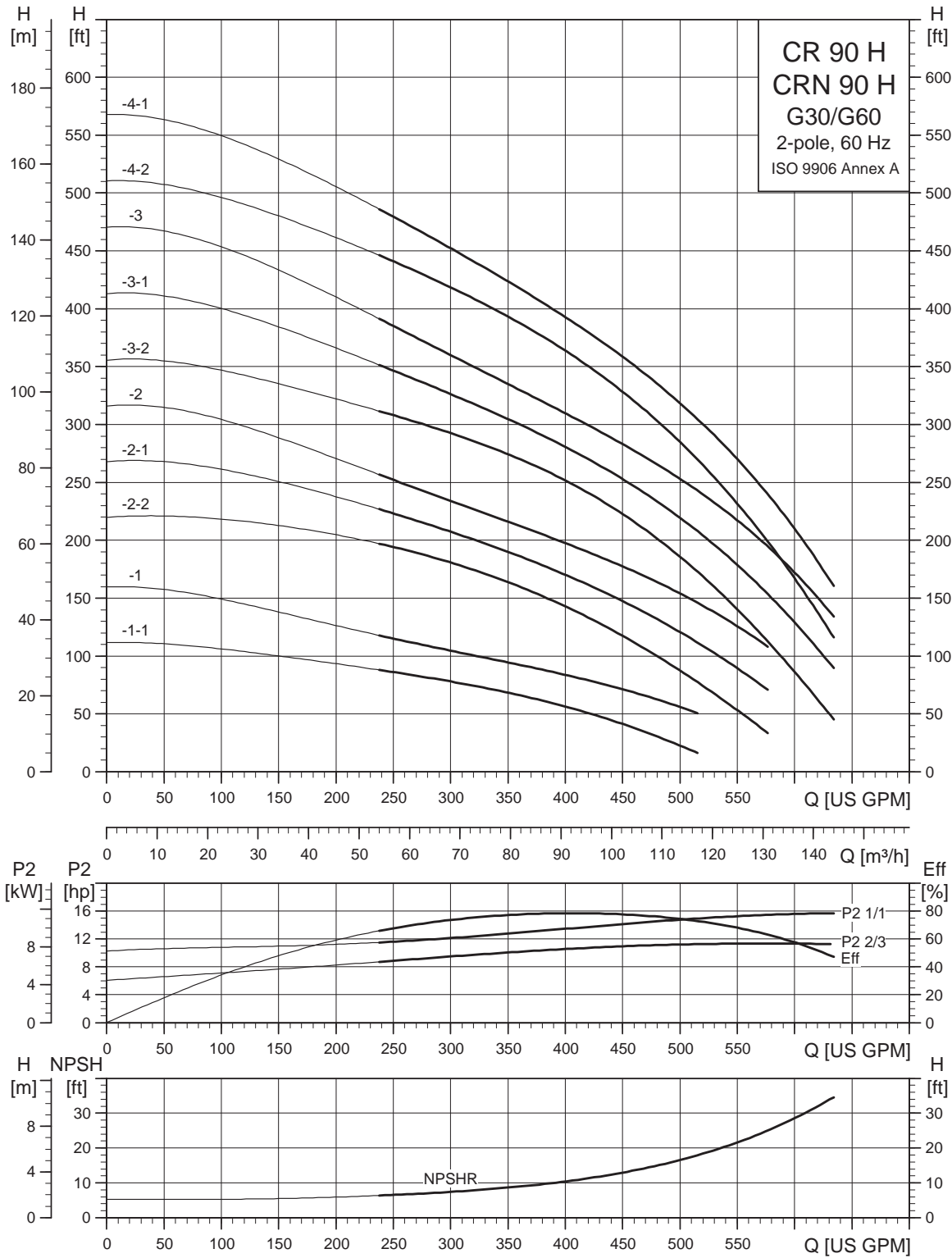
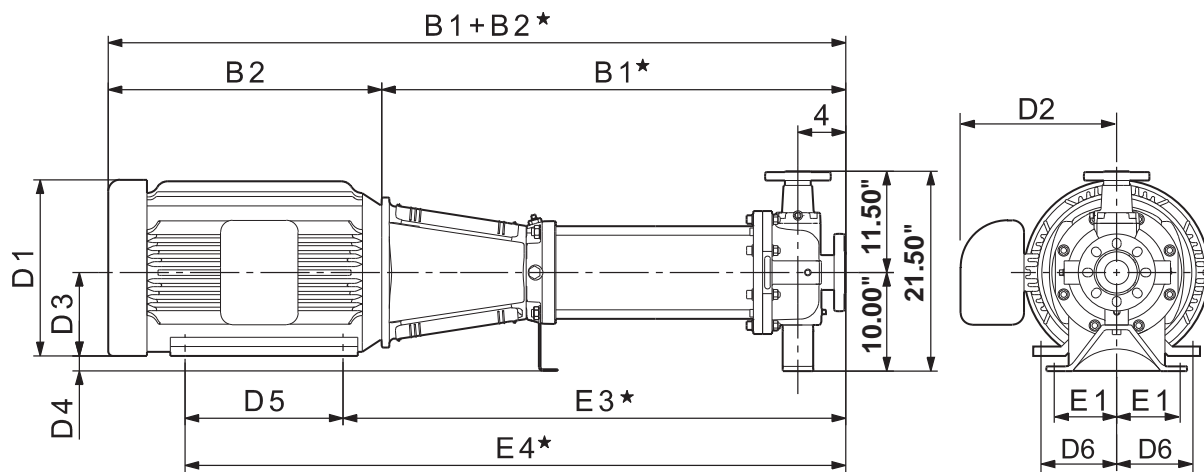


## CR 90 H G30/G60



TM04 6304 4610

## Dimensional sketches G30 (3" x 2" x 13")



TM04 4872 0510

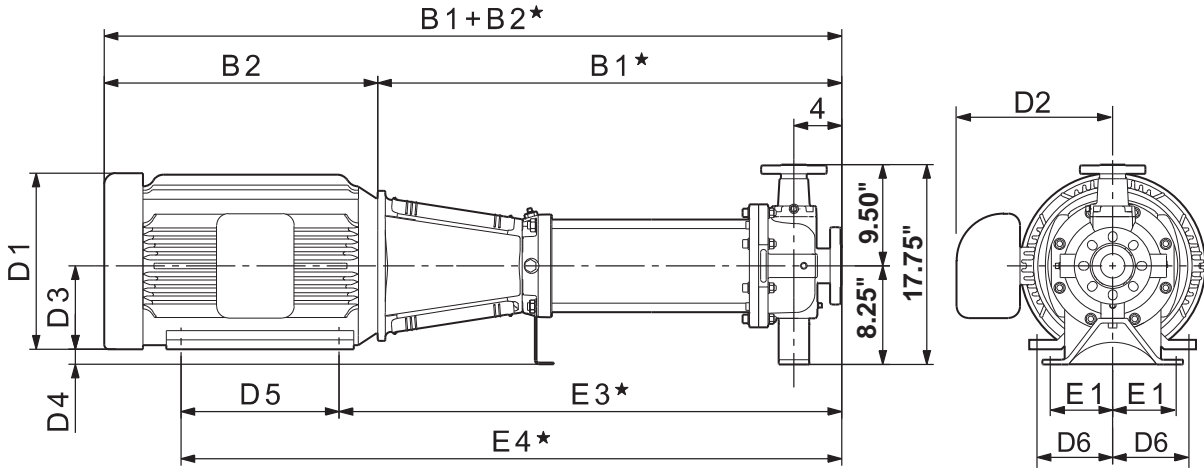
## Dimensions and weights G30 (3" x 2" x 13")

Pump type	Power [hp]	Ph	Dimensions [inches]													Ship. weight [lbs]	Dimensions [inches]			Ship. weight [lbs]	
			TEFC										ODP				MLE				
			B1*	B1+B2*	E1	E3*	E4*	D1	D2	D3	D4	D5	D6	D1	D2		B1+B2*	D1	D2		B1+B2*
CR(N) 90-1-1 H	15	3	26.38	46.50	4.88	30.38	38.63	12.63	9.50	6.25	3.75	8.25	5.00	10.75	6.88	44.25	—	—	—	—	—
CR(N) 90-1 H	20	3	26.38	46.50	4.88	30.38	38.63	12.63	9.50	6.25	3.75	8.25	5.00	10.75	6.88	44.25	—	—	—	—	—
CR(N) 90-2-2 H	25	3	30.00	51.38	4.88	34.50	44.00	12.75	12.13	7.00	3.00	9.50	5.50	11.50	11.38	48.75	—	—	—	—	—
CR(N) 90-2-1 H	30	3	30.00	51.38	4.88	34.50	45.50	12.75	12.13	7.00	3.00	11.00	5.50	11.50	11.38	50.25	—	—	—	—	—
CR(N) 90-2 H	40	3	30.00	51.38	4.88	34.50	45.50	15.63	12.13	7.00	3.00	11.00	5.50	11.50	11.38	50.88	—	—	—	—	—
CR(N) 90-3-2 H	40	3	33.63	55.00	4.88	38.13	49.13	15.63	12.13	7.00	3.00	11.00	5.50	11.50	11.38	54.50	—	—	—	—	—
CR(N) 90-3-1 H	50	3	33.63	58.75	4.88	38.63	50.63	16.50	14.63	8.00	2.00	12.00	6.25	13.38	12.25	55.50	—	—	—	—	—
CR(N) 90-3 H	50	3	33.63	58.75	4.88	38.63	50.63	16.50	14.63	8.00	2.00	12.00	6.25	13.38	12.25	55.50	—	—	—	—	—
CR(N) 90-4-2 H	60	3	37.25	64.38	4.88	42.88	54.13	17.00	14.63	9.00	1.00	11.25	7.00	15.13	11.63	61.00	—	—	—	—	—
CR(N) 90-4-1 H	60	3	37.25	64.38	4.88	42.88	54.13	17.00	14.63	9.00	1.00	11.25	7.00	15.13	11.63	61.00	—	—	—	—	—

Note: Terminal box is on top of motor on 3-phase up to 10 hp. All other motors have terminal box on the side. Reference D2 dimension. Weights are based on pump with TEFC motor.

★ Add 0.67 inches for CRN-H dimensions.

## Dimensional sketches G60 (3" x 2" x 8", 3" x 2" x 10")



TM04 4872 0510

## Dimensions and weights G60 (3" x 2" x 8", 3" x 2" x 10")

Pump type	Power [hp]	Ph	Dimensions [inches]											Ship. weight [lbs]	Dimensions [inches]			Ship. weight [lbs]			
			TEFC												ODP				MLE		
			B1*	B1+B2*	E1	E3*	E4*	D1	D2	D3	D4	D5	D6		D1	D2	B1+B2*		D1	D2	B1+B2*
CR(N) 90-1-1 H	15	3	26.38	46.50	4.88	30.38	38.63	12.63	9.50	6.25	2.00	8.25	5.00	10.75	6.88	44.25	—	—	—	—	—
CR(N) 90-1 H	20	3	26.38	46.50	4.88	30.38	38.63	12.63	9.50	6.25	2.00	8.25	5.00	10.75	6.88	44.25	—	—	—	—	—
CR(N) 90-2-2 H	25	3	30.00	51.38	4.88	34.50	44.00	12.75	12.13	7.00	1.25	9.50	5.50	11.50	11.38	48.75	—	—	—	—	—
CR(N) 90-2-1 H	30	3	30.00	51.38	4.88	34.50	45.50	12.75	12.13	7.00	1.25	11.00	5.50	11.50	11.38	50.25	—	—	—	—	—
CR(N) 90-2 H	40	3	30.00	51.38	4.88	34.50	45.50	15.63	12.13	7.00	1.25	11.00	5.50	11.50	11.38	50.88	—	—	—	—	—
CR(N) 90-3-2 H	40	3	33.63	55.00	4.88	38.13	49.13	15.63	12.13	7.00	1.25	11.00	5.50	11.50	11.38	54.50	—	—	—	—	—
CR(N) 90-3-1 H	50	3	33.63	58.75	4.88	38.63	50.63	16.50	14.63	8.00	0.25	12.00	6.25	13.38	12.25	55.50	—	—	—	—	—
CR(N) 90-3 H	50	3	33.63	58.75	4.88	38.63	50.63	16.50	14.63	8.00	0.25	12.00	6.25	13.38	12.25	55.50	—	—	—	—	—
CR(N) 90-4-2 H	60	3	37.25	64.38	4.88	42.88	54.13	17.00	14.63	9.00	-0.75	11.25	7.00	15.13	11.63	61.00	—	—	—	—	—
CR(N) 90-4-1 H	60	3	37.25	64.38	4.88	42.88	54.13	17.00	14.63	9.00	-0.75	11.25	7.00	15.13	11.63	61.00	—	—	—	—	—

Note: Terminal box is on top of motor on 3-phase up to 10 hp. All other motors have terminal box on the side. Reference D2 dimension. Weights are based on pump with TEFC motor.

★ Add 0.67 inches for CRN-H dimensions.