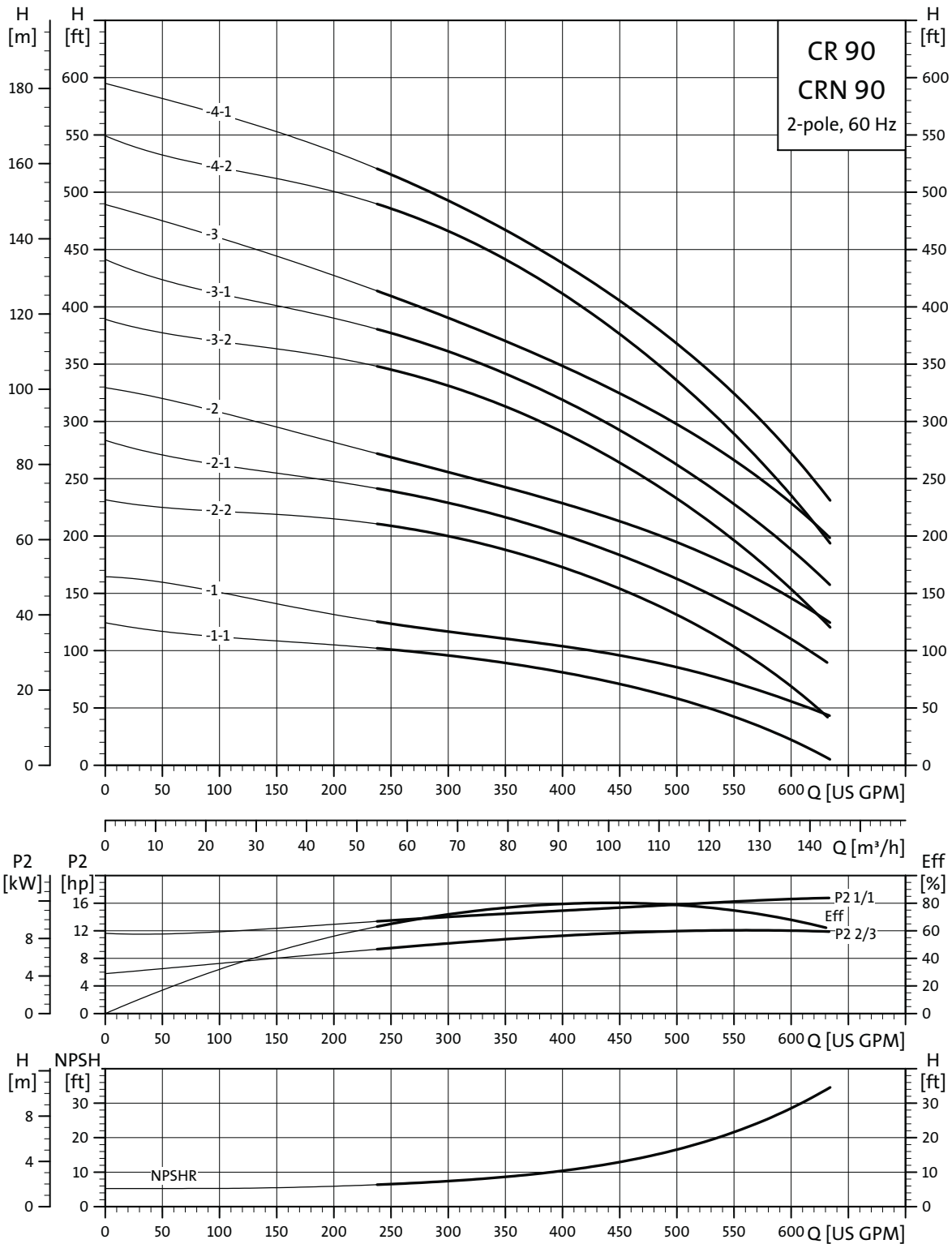
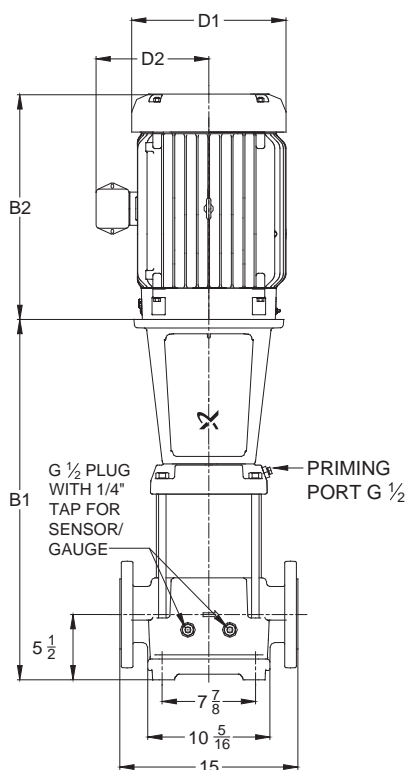


CR, CRN 90

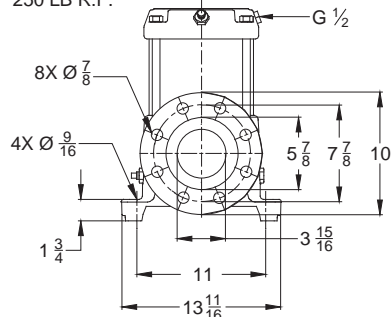


TM02 0042 1303



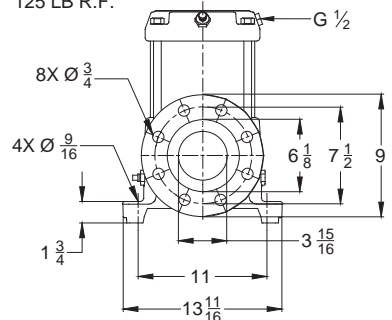
4-5 STAGES

4" ANSI
250 LB R.F.



1-3 STAGES

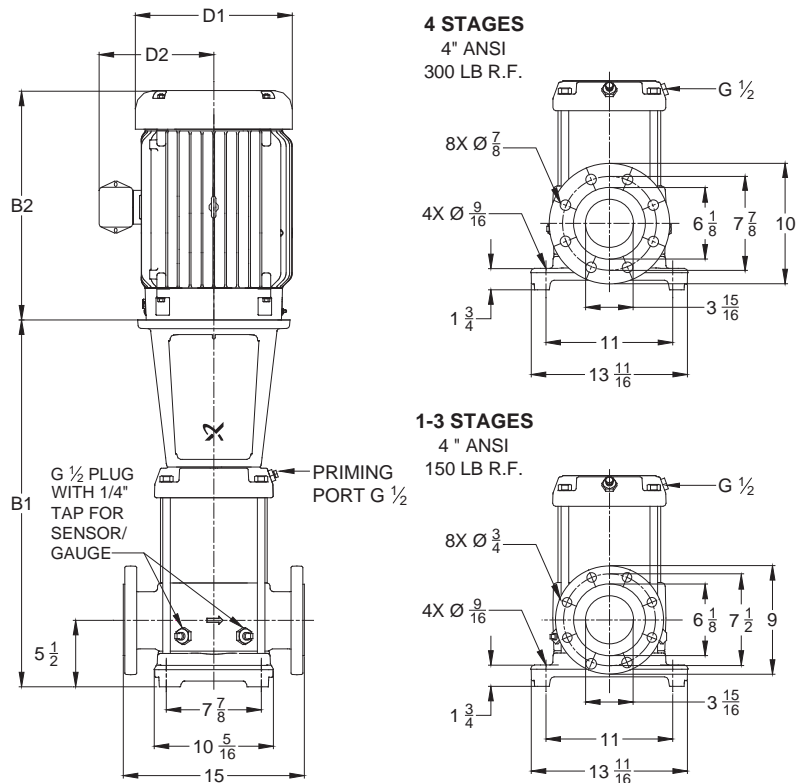
4" ANSI
125 LB R.F.



TM02 7702 3804

Pump type	P2 [hp]	Ph.	ANSI dimensions [inch]									Ship Wt. [lbs.]	ANSI dimensions [inch]			Ship Wt. [lbs.]
			B1	TEFC			ODP			MLE						
				D1	D2	B1+B2	D1	D2	B1+B2	D1	D2		B1+B2			
CR 90-1-1	15	3	26.81	10.22	8.67	43.39	10.62	7.33	43.12	387	-	-	-	-		
CR 90-1	20	3	26.81	10.22	8.67	43.39	11.50	8.92	46.50	392	-	-	-	-		
CR 90-2-2	25	3	30.43	12.94	11.52	50.25	11.50	8.94	51.24	450	-	-	-	-		
CR 90-2-1	30	3	30.43	15.32	13.11	53.62	11.50	8.94	52.24	611	-	-	-	-		
CR 90-2	40	3	30.43	15.32	13.11	53.62	13.25	12.21	53.68	625	-	-	-	-		
CR 90-3-2	40	3	34.06	15.32	13.11	57.25	13.25	12.21	57.31	636	-	-	-	-		
CR 90-3-1	50	3	34.06	16.88	14.12	61.87	13.25	12.21	56.81	667	-	-	-	-		
CR 90-3	50	3	34.06	16.88	14.12	61.87	13.25	12.21	56.81	667	-	-	-	-		
CR 90-4-2	60	3	37.68	19.00	14.90	68.47	15.12	13.19	63.81	869	-	-	-	-		
CR 90-4-1	60	3	37.68	19.00	14.90	68.47	15.12	13.19	63.81	869	-	-	-	-		

¹⁾ Weights are based on pump with TEFC motor (see price list for individual weights)
All dimensions in inches unless otherwise noted.

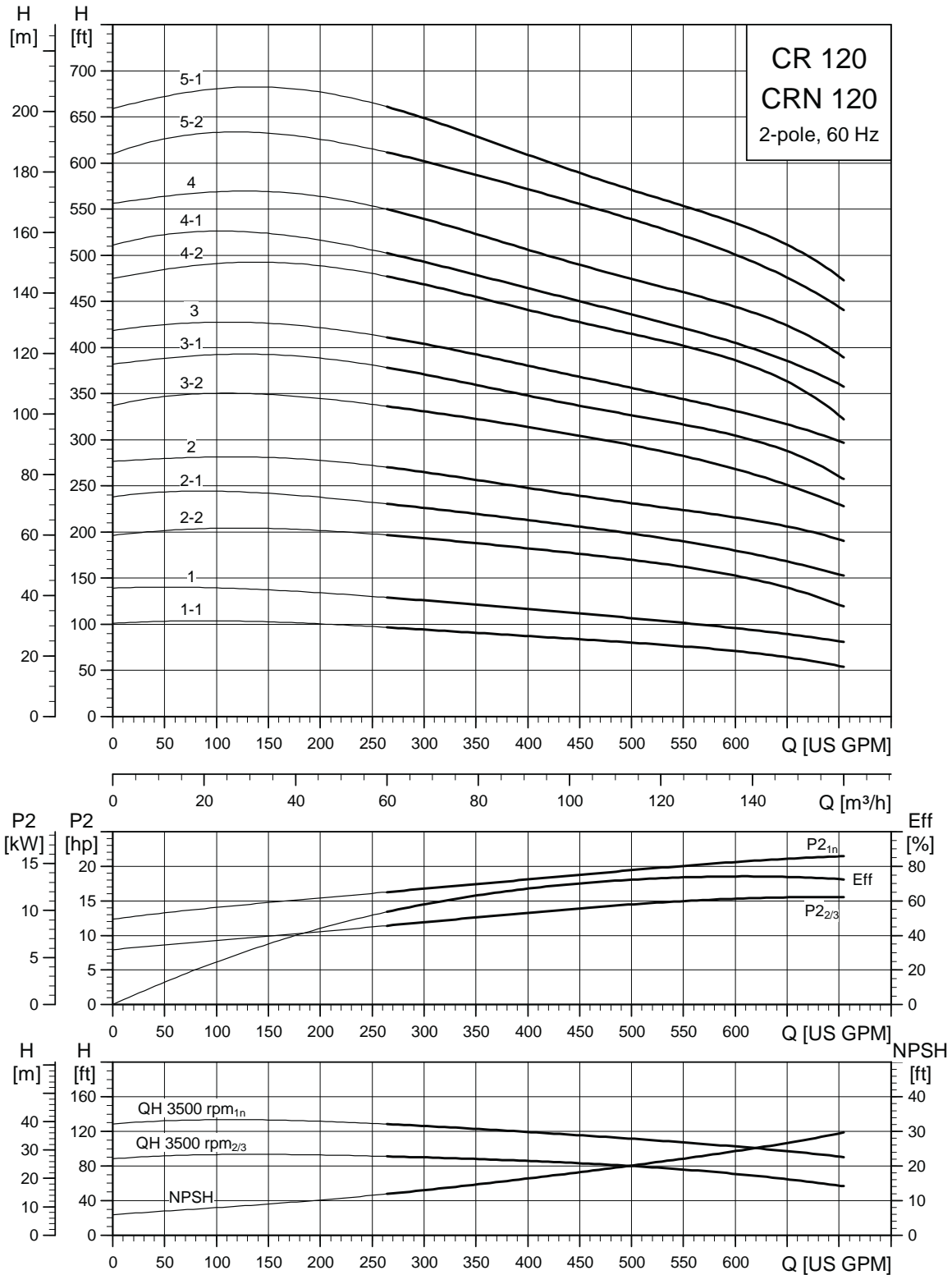


TM02 7706 3804

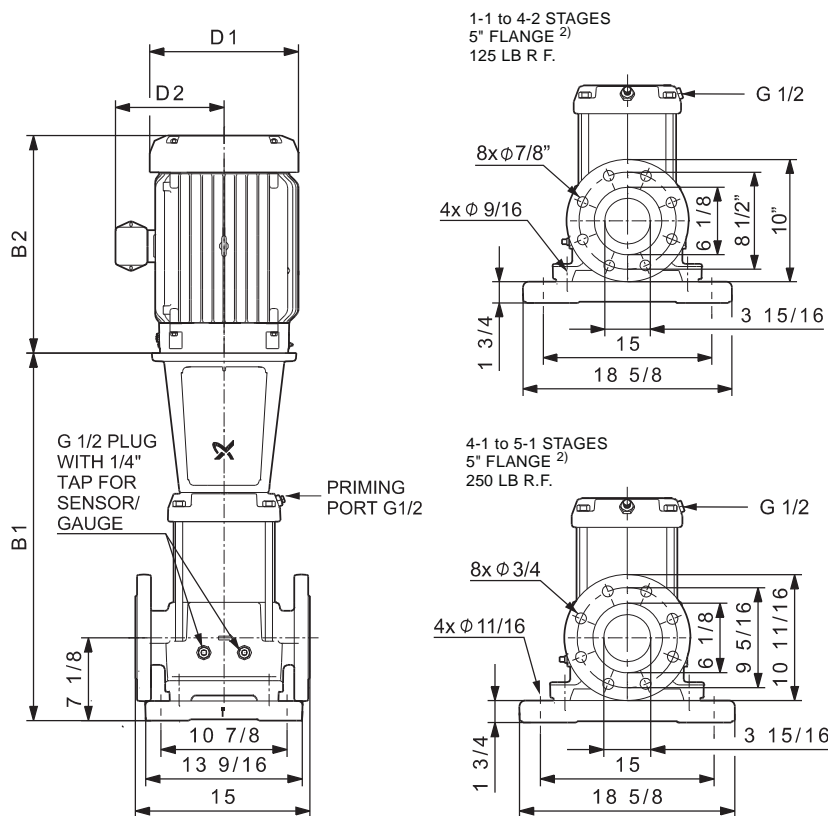
Pump type	P2 [hp]	Ph.	Dimensions [inch]									Dimensions [inch]			
			B1	TEFC			ODP			Ship Wt. [lbs.]	MLE			Ship Wt. [lbs.]	
				D1	D2	B1+B2	D1	D2	B1+B2		D1	D2	B1+B2		
CRN 90-1-1	15	3	26.81	10.22	8.67	43.39	10.62	7.33	43.12	393	-	-	-	-	
CRN 90-1	20	3	26.81	10.22	8.67	43.39	11.50	8.92	46.50	398	-	-	-	-	
CRN 90-2-2	25	3	30.43	12.94	11.52	50.25	11.50	8.94	51.24	455	-	-	-	-	
CRN 90-2-1	30	3	30.43	15.32	13.11	53.62	11.50	8.94	52.24	629	-	-	-	-	
CRN 90-2	40	3	30.43	15.32	13.11	53.62	13.25	12.21	53.68	631	-	-	-	-	
CRN 90-3-2	40	3	34.06	15.32	13.11	57.25	13.25	12.21	57.31	642	-	-	-	-	
CRN 90-3-1	50	3	34.06	16.88	14.12	61.87	13.25	12.21	56.81	668	-	-	-	-	
CRN 90-3	50	3	34.06	16.88	14.12	61.87	13.25	12.21	56.81	672	-	-	-	-	
CRN 90-4-2	60	3	37.68	19.00	14.90	68.47	15.12	13.19	63.81	876	-	-	-	-	
CRN 90-4-1	60	3	37.68	19.00	14.90	68.47	15.12	13.19	63.81	876	-	-	-	-	

¹⁾ Weights are based on pump with TEFC motor (see price list for individual weights)
All dimensions in inches unless otherwise noted.

CR, CRN 120



TM03 9192 0209

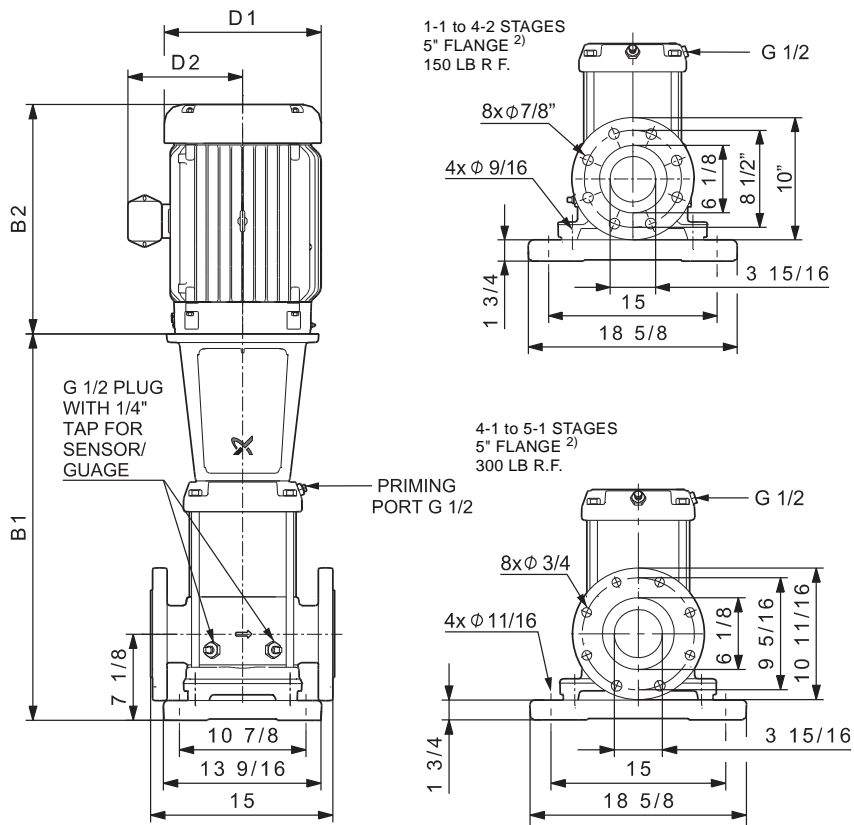


TMD4 9630 4810

Pump type	P2 [hp]	Ph.	Dimensions [inch]							Ship Wt. [lbs.]
			B1	TEFC			ODP			
				D1	D2	B1+B2	D1	D2	B1+B2	
CR 120-1-1	20	3	32.83	10.22	8.67	49.41	11 50	8.92	52 52	427
CR 120-1	25	3	32.83	12.94	11.52	52.65	11 50	8.94	53 64	507
CR 120-2-2	40	3	38.98	15.32	13.11	62.17	13 25	12 21	62 23	704
CR 120-2-1	40	3	38.98	15.32	13.11	62.17	13 25	12 21	62 23	704
CR 120-2	50	3	38.98	16.88	14.12	66.79	13 25	12 21	61.73	735
CR 120-3-2	60	3	45.08	19.00	14.90	75.87	15.12	13.19	71 21	936
CR 120-3-1	60	3	45.08	19.00	14.90	75.87	15.12	13.19	71 21	936
CR 120-3	75	3	45.08	19.00	14.90	75.87	15.18	13.19	71 21	1045
CR 120-4-2	75	3	51.69	19.00	14.90	82.48	15.18	13.19	77 82	1199
CR 120-4-1	100	3	51.69	19.00	17.38	82.51	15.12	13.19	79 07	1468
CR 120-4	100	3	51.69	19.00	17.38	82.51	15.12	13.19	79 07	1468
CR 120-5-2	100	3	57.80	19.00	17.38	88.62	15.12	13.19	85.18	1490

Dimensions [inch]				Ship Wt. [lbs.]
MLE				
D1	D2	B1+B2		
-	-	-	-	
-	-	-	-	
-	-	-	-	
-	-	-	-	
-	-	-	-	
-	-	-	-	
-	-	-	-	
-	-	-	-	
-	-	-	-	

¹⁾ Weights are based on pump with TEFC motor (see price list for individual weights).
²⁾ CR 5" flange is not manufactured to ANSI specification. Gasket contact surface is approximately 0.25". CR 6" ANSI flange adapter is manufactured to ANSI B16.5 specification.
 All dimensions in inches unless otherwise noted.



TM04 9631 4810

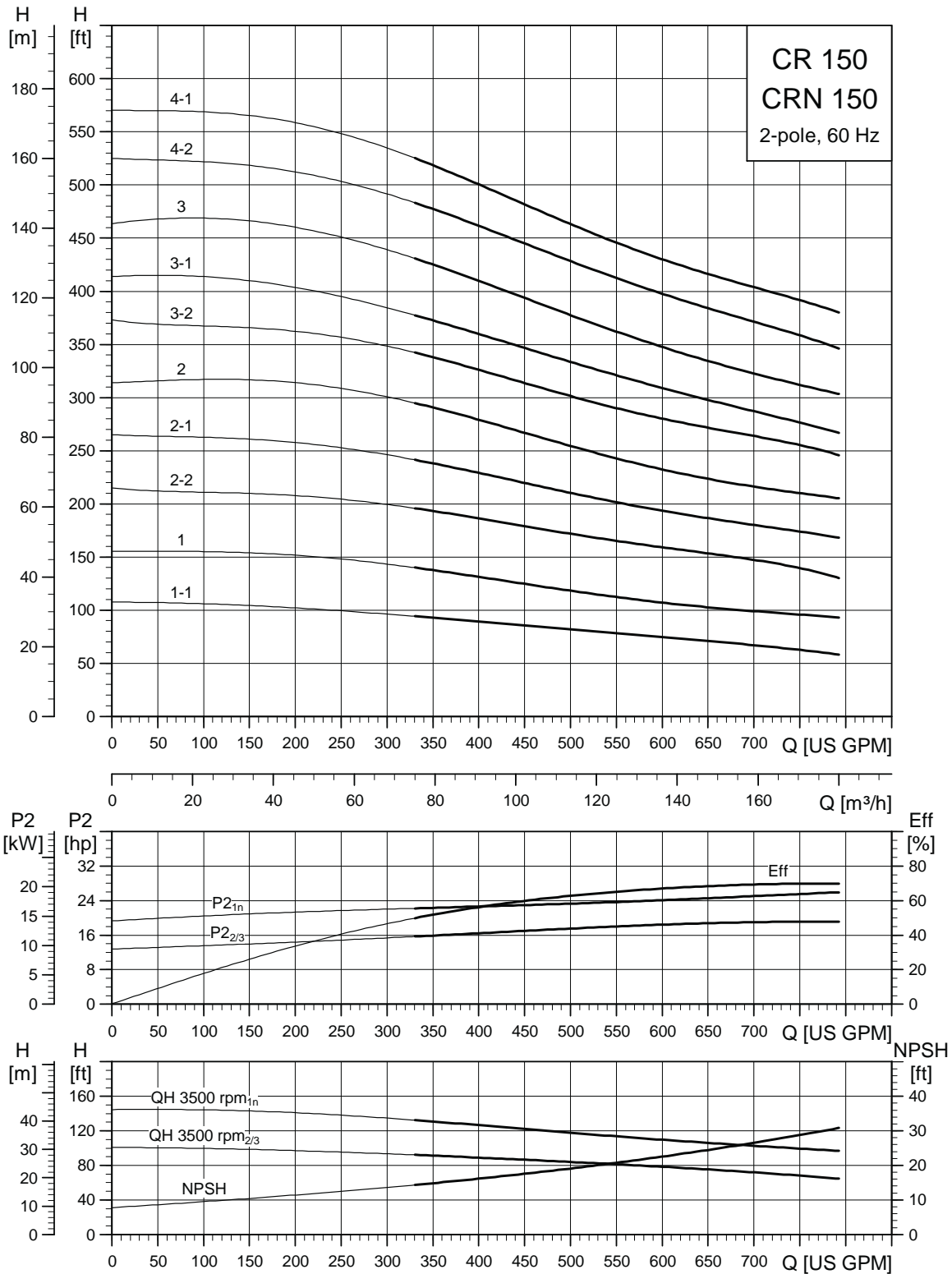
Pump type	P2 [hp]	Ph.	Dimensions [inch]							Ship Wt. [lbs.]	Dimensions [inch]			Ship Wt. [lbs.]
			B1	TEFC			ODP				MLE			
				D1	D2	B1+B2	D1	D2	B1+B2		D1	D2	B1+B2	
CRN 120-1-1	20	3	32.83	10.22	8.67	49.41	11.50	8.92	52.52	434	-	-	-	-
CRN 120-1	25	3	32.83	12.94	11.52	52.65	11.50	8.94	53.64	514	-	-	-	-
CRN 120-2-2	40	3	38.98	15.32	13.11	62.17	13.25	12.21	62.23	711	-	-	-	-
CRN 120-2-1	40	3	38.98	15.32	13.11	62.17	13.25	12.21	62.23	711	-	-	-	-
CRN 120-2	50	3	38.98	16.88	14.12	66.79	13.25	12.21	61.73	742	-	-	-	-
CRN 120-3-2	60	3	45.08	19.00	14.90	75.87	15.12	13.19	71.21	943	-	-	-	-
CRN 120-3-1	60	3	45.08	19.00	14.90	75.87	15.12	13.19	71.21	943	-	-	-	-
CRN 120-3	75	3	45.08	19.00	14.90	75.87	15.18	13.19	71.21	1052	-	-	-	-
CRN 120-4-2	75	3	51.69	19.00	14.90	82.48	15.18	13.19	77.82	1206	-	-	-	-
CRN 120-4-1	100	3	51.69	19.00	17.38	82.51	15.12	13.19	79.07	1475	-	-	-	-
CRN 120-4	100	3	51.69	19.00	17.38	82.51	15.12	13.19	79.07	1475	-	-	-	-
CRN 120-5-2	100	3	57.8	19.00	17.38	88.62	15.12	13.19	85.18	1497	-	-	-	-

¹⁾ Weights are based on pump with TEFC motor (see price list for individual weights).

²⁾ CR 5" flange is not manufactured to ANSI specification. Gasket contact surface is approximately 0.25". CR 6" ANSI flange adapter is manufactured to ANSI B16.5 specification.

All dimensions in inches unless otherwise noted.

CR, CRN 150



TM03 9193 0209